

APPENDIX E

REAL ESTATE PLAN

YUBA RIVER RESTORATION STUDY
(YUBA COUNTY, CALIFORNIA)

08 MARCH 2019

PREPARED
BY THE
SACRAMENTO DISTRICT

TABLE OF CONTENTS

1. INTRODUCTION
2. STUDY AUTHORITY
3. PROJECT DESCRIPTION
4. DESCRIPTION OF LERRDs
5. LERRDs OWNED BY THE NFS AND CREDITING
6. STANDARD FEDERAL ESTATES AND NON-STANDARD ESTATES
7. DESCRIPTION OF ANY EXISTING FEDERAL PROJECT IN OR PARTIALLY IN THE PROPOSED PROJECT
8. DESCRIPTION OF ANY FEDERALLY OWNED LAND NEEDED FOR THE PROJECT
9. APPLICATION OF NAVIGATIONAL SERVITUDE TO THE LERRD'S REQUIREMENT
10. PROJECT MAP
11. ANTICIPATED INCREASED FLOODING AND IMPACTS
12. COST ESTIMATE
13. RELOCATION ASSISTANCE BENEFITS
14. MINERAL / TIMBER ACTIVITY
15. NON-FEDERAL SPONSOR'S ABILITY TO ACQUIRE
16. ZONING ANTICIPATED IN LIEU OF ACQUISITION
17. ACQUISITION SCHEDULE
18. DESCRIPTION OF FACILITY AND UTILITY RELOCATIONS
19. HAZARDOUS, TOXIC, AND RADIOLOGICAL WASTE IMPACTS
20. ATTITUDE OF LANDOWNERS
 - EXHIBIT A – ASSESSMENT OF NON-FEDERAL PARTNERS REAL ESTATE ACQUISITION CAPABILITY
 - EXHIBIT B – CADASTRAL MAP AND TRACT REGISTER, MINERAL MAP
 - EXHIBIT C – RISK LETTER

YUBA RIVER RESTORATION STUDY
REAL ESTATE PLAN

1. Introduction

This Real Estate Plan is prepared in accordance with ER 405-1-12, Section 12-16, and in support of the Interim Feasibility Report and Environmental Assessment to determine Federal interest in Ecosystem Restoration (ER) improvements in the Yuba River in Northern California. The purpose and scope of this Real Estate Plan is to describe the Recommended Plan land and real estate administrative costs for the habitat restoration project. This report is to be used for planning purposes only. There will be modifications to the plans that occur during Preconstruction, Engineering and Design (PED) phase, thus changing the final acquisition area(s) and/or land and administration costs.

Non Federal Sponsors

The Yuba Water Agency is a stand-alone public agency governed by a board of seven elected officials to serve the people of Yuba County. Established by a special act of the California State Legislature in 1959, the agency's primary missions are flood risk reduction, water supply reliability, fish habitat protection and enhancement, hydroelectric generation, and recreation at New Bullard's Bar.

2. Study Authority

The authority to study the Sacramento River Basin for flood control and allied purposes, including ecosystem restoration, was granted in the Rivers and Harbors Act of 1962, P.L. 87-874, Section 209, which reads:

“The Secretary of the Army is hereby authorized and directed to cause surveys for flood control and allied purposes, including channel and major drainage improvements...in drainage areas of the United States and its territorial possessions, which include the following named localities...Sacramento River Basin and streams in northern California draining into the Pacific Ocean for the purposes of developing, where feasible, multi-purpose water resource projects, particularly those which would be eligible under the provisions of Title III of Public Law 85-500”.

On 28 April 2016, a Senate Committee Resolution clarified that ecosystem restoration is to be included in the investigation:

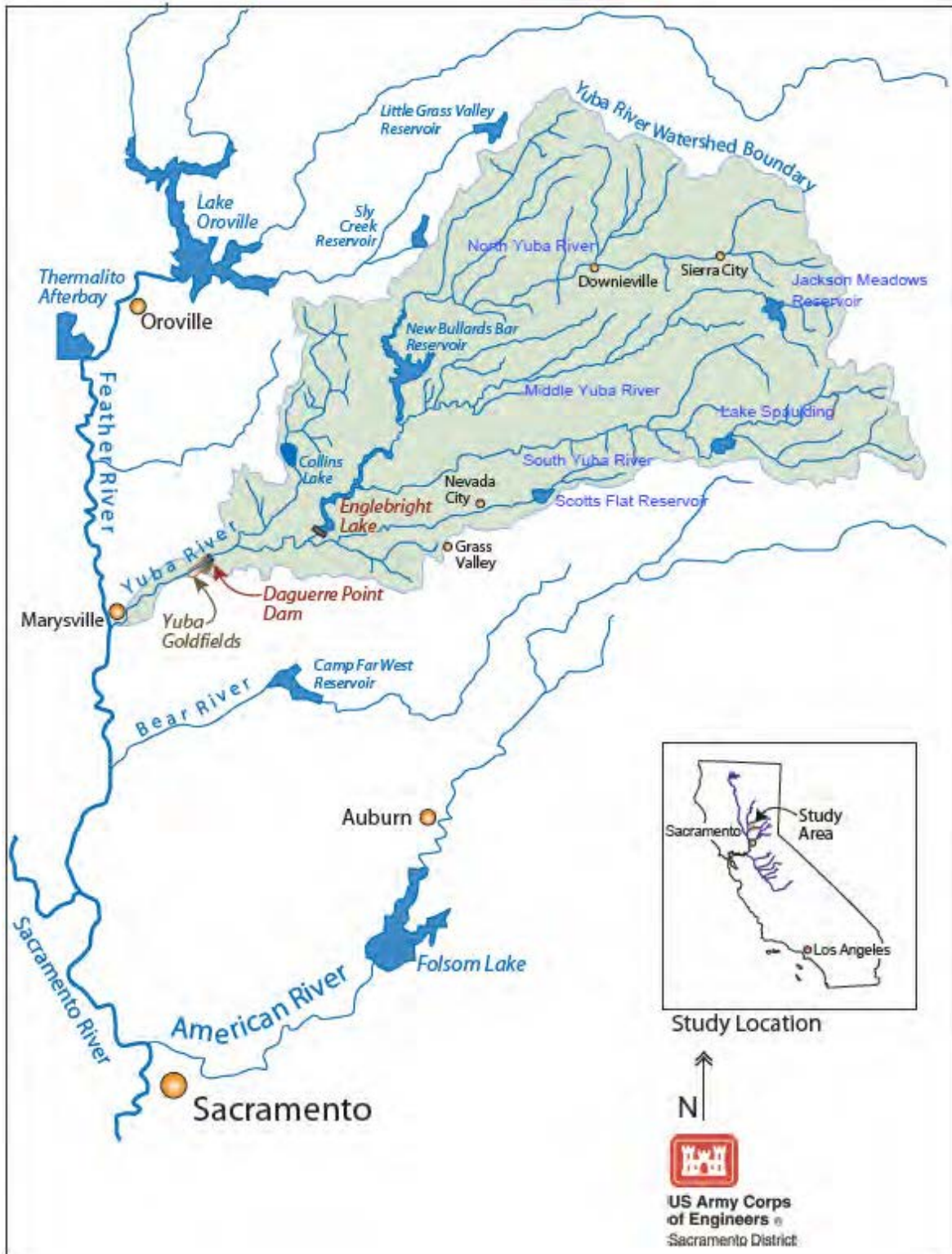
“Resolved by the Committee on Environment and Public Works of the United States Senate, that the Secretary of the Army, pursuant to the Rivers and Harbors Act of 1962, Pub. L. 87-874 § 209, is requested to investigate ecosystem restoration opportunities in the Sacramento River Basin and streams in northern California draining into the Pacific Ocean, including the Yuba River Watershed”.

3. Project Description

The Yuba River Watershed (Figure 1) encompasses 1,340 square miles on the western slopes of the Sierra Nevada Mountain Range, and is located in portions of Sierra, Placer, Yuba, and Nevada counties (Reynolds et al. 1993). The Yuba River is a tributary of the Feather River which, in turn, flows into the Sacramento River near the town of Verona, California.

The Yuba River flows through forest, foothill chaparral, and agricultural lands. Levees are absent from most of its course except for near the river's confluence with the Feather River. At that point, the Yuba River is bounded by setback levees for approximately six miles.

Figure 1. Study Area Map



The primary watercourses of the upper Yuba River Watershed are the South, Middle, and North Yuba rivers. The South Yuba River flows into Englebright Lake. The Middle Yuba River flows into the North Yuba River and together they are referred to as the upper Yuba River. Beginning at the confluence of the North Yuba and the Middle Yuba rivers, the main stem upper Yuba River flows approximately 7.8 miles downstream to Englebright Dam. Englebright Dam's reservoir extends approximately 8 miles from its high water surface elevation at River Mile 32.2 to the Englebright Dam at RM 24 (YSF 2013). Below Englebright Dam, the lower Yuba River reach extends approximately an additional 24 miles downstream to the confluence with the Feather River. The study area begins in the city of Marysville and extends upstream approximately 90 miles, past Sierra City, California, in Sierra County.

Figure 2. Englebright Dam



Daguerre Point Dam is located on the lower Yuba River approximately 11.5 river miles (RM) upstream from the confluence of the lower Yuba and lower Feather rivers near Marysville (USACE 2013). Owned by USACE, Daguerre Point Dam is a 25 feet (ft.) tall, low-head dam across the lower Yuba River and there is no reservoir associated with the dam. Englebright Dam, located approximately 12.3 miles upstream of Daguerre Point Dam, is a 260-ft tall concrete dam also owned by USACE. Located on the Yuba River approximately 18 miles upstream of Englebright Dam, the 645 ft. high New Bullard's Bar Dam (owned by Yuba County Water Agency) is the tallest man-made structure in the Yuba River Watershed.

Figure 3. Daguerre Point Dam



Figure 4. New Bullard's Bar Dam



The Yuba River is one of California's signature rivers. Since the Gold Rush, prior to California statehood, the Yuba River has been a source of life-sustaining water for native peoples, farmers and ranchers, as well as for salmon, steelhead and other fish and wildlife.

The United States Army Corps of Engineers (USACE) has a long history of involvement with the Yuba River. With the advent of the California gold rush in the mid-1800s, hydraulic mining washed away entire sections of the upper Yuba River Watershed. The release of incredible amounts of sediment and contaminated mining debris threatened nearby cities, farms and the river itself. The United States Congress directed the Federal California Debris Commission (CDC) to manage this dangerous mining sediment. In 1906 construction was completed on Daguerre Point Dam, and then the 260-foot tall Englebright Dam was completed in 1941, both to impound mining debris. These dams continue to contain this contaminated mining debris, with an estimated 28 million cubic yards impounded behind Englebright Dam and 4 million cubic yards behind Daguerre Point Dam. Upon Congressional decommissioning of the CDC in 1986, administration of Englebright Dam and Lake was assumed by USACE. The creation of these debris dams and historical hydraulic mining activities have minimized the existing critical habitat of some species listed as threatened under the Endangered Species Act included 1) spring-run Chinook salmon; 2) steelhead; and 3) green sturgeon.

All of the planning objectives focus on activities to be conducted within the study area over a 50-year period of analysis. Based upon the problems and opportunity identified in the study area, planning objectives include the following.

- **Improve the quantity, quality, and complexity of aquatic habitats.**

This objective addresses the improvement of aquatic habitats and the functions those habitats provide for all life stages of anadromous fish, water birds, amphibians, and other wildlife within the watershed.

- **Improve the quantity, quality, complexity, and connectivity of riparian habitats.**

This objective addresses the improvement of riparian habitats and migratory corridors and the functions those habitats provide for waterfowl, water birds, riparian songbirds, amphibians, and other wildlife within the watershed.

- **Restore longitudinal river connectivity.**

This objective addresses the improvement of hydrologic and aquatic habitat connectivity. Critical components of connectivity include the longitudinal, or downstream, movement of water and sediment, and the upstream movement of anadromous fish and the oceanic nutrients they provide.

- **Restore lateral connectivity of the river to its floodplain.**

This objective addresses the improvement of hydrologic connectivity within and between aquatic and floodplain habitats. Critical components of connectivity include the lateral, or horizontal movement of water within the channel and onto the floodplain, and the vertical, or downward movement of water into the ground.

4. Description of Land, Easements, Rights-Of-Way, Relocation, and Disposal Areas (LERRDs)

Once the Project Partnership Agreement (PPA) process is complete, the Sacramento District Engineering Branch will prepare the final design for advertisement and construction. During this process the tract register and tract maps will be updated to reflect any modifications to include final staging areas, access requirements, and restoration features. This information will be used for LERRD crediting project close out purposes.

The Recommended Plan includes the following habitat increments: 2, 3A, 5A and 5B.

Increment 2 (Highway 20 to Hammon Bar) consists of flood plain grading, riparian planting using excavators and waterjet stingers (a tool to plant dormant unrooted cuttings of willows, cottonwoods, dogwoods, and other species), bank scalloping, and creation of a small backwater area. Areas that are graded into flood plains will not receive riparian planting. This increment includes a temporary bridge access and staging.

Increment 3A (Hammon Bar to Upstream of Daguerre Point Dam) consists of flood plain grading, side channel creation, riparian planting using excavators and waterjet stingers (a tool to plant dormant unrooted cuttings of willows, cottonwoods, dogwoods, and other species), minor bank scalloping, and channel stabilization through the installation of engineered log jams. Areas that are graded into flood plains will not receive riparian planting. This increment includes a temporary bridge for access and staging areas.

Increments 5A (Bar C to Bar D) and 5B (Bar D to Island B) consists of flood plain grading, side channel creation, riparian planting using excavators and waterjet stingers and creation

of a small backwater area. Areas that are graded into flood plains will not receive riparian planting. This increment includes access and staging areas.

Potential Borrow Sites and Disposal Sites

Borrow volumes are expected to be extremely small and any necessary borrow can be supplied by nearby excavation associated with this project. Multiple potential placement/disposal sites for excavated material are present in the project area, including the Teichert-Hallwood Facility, Western Aggregates, and Butte Sand and Gravel. Placement/disposal of excavated material will likely require characterization of the material.

Access

From the proposed staging areas, vehicles accessing the restoration sites would haul primarily on the sand bars along the river. In some cases, temporary haul roads may need to be constructed in order to provide better access to the sites. Occasionally, rather than hauling on sand bars, vehicles would have access to farm roads.

In some cases, access to the restoration sites could only be provided through temporary river crossings. These would consist of 10 foot wide by 10 foot long railroad Flatcar Bridge that would be placed over the river channel for temporary access, when needed.

Monitoring and Adaptive Management Plan

Monitoring and Adaptive Management costs, which are anticipated to be minimal, will be included in first costs and operations, maintenance, repair, replacement, and relocations (OMRR&R) costs, as appropriate.

Table 1 – Recommended Plan Features

Restorations Sites	Project Features	Estate	Acres
Increment 2 – (Highway 20 to Hammon Bar) Increment 3A (Hammon Bar to Upstream of Daguerre Point Dam) Increment 5A – (Bar C to Bar D) Increment 5B – (Bar D to Island B)	Floodplain lowering, bank scalloping, riparian planting, side channels, channel stabilization, large woody material placement, engineered log jam placement, new back water areas, anabranching channel	Fee Title	692.26
	Staging Areas and Temporary Bridges	Temporary Work Area Easement	5.69
	O&M Roads	Permanent Road Easement	20.95
	39 owners - 57 parcels, 33 mineral rights, 17 private owners, 9 businesses or farms, 1 state owned, 1 federally owned, 3 TBD with title reports	Total Acres: (Rounded)	718.90

5. LERRDs Owned by the Non-Federal Sponsor and Crediting

It is understood that the sponsor will provide a credit appraisal for project lands associated with the USACE Recommended Plan. This credit appraisal will be prepared in accordance with the Uniform Appraisal Standards (USPAP) and prepared by a certified appraiser who will be approved as a qualified appraiser by the USACE Sacramento District Appraisal Branch. At this time there are no sponsor owned land identified in the project footprint.

6. Standard Federal Estates

The non-Federal sponsor will be required to acquire the minimum interest in real estate that will support the construction and subsequent operation and maintenance of the proposed USACE project.

The following standard estates (with definitions) are identified as required for the project:

Temporary Work Area Easement

A temporary easement and right-of-way in, on, over and across for a period not to exceed 5 years after the execution of the construction contract, beginning with date possession of the land is granted to the Yuba County Water District/or the United States of America its representatives, agents, and contractors, for use by the Yuba County Water District and/or the United States of America its representatives, agents, and contractors as a (borrow area) (work area), including the right to borrow and/or deposit fill, spoil and waste material thereon) (move, store and remove equipment and supplies, and erect and remove temporary structures on the land and to perform any other work necessary and incident to the construction of the Yuba Restoration Project, together with the right to trim, cut, fell and remove there from all trees, underbrush, obstructions, and any other vegetation, structures, or obstacles within the limits of the right-of-way; reserving however, to the landowners, their heirs and assigns, all such rights and privileges as may be used without interfering with or abridging the rights and easement hereby acquired; subject, however, to existing easements for public roads and highways, public utilities, railroads and pipelines.

Fee Simple Title

The fee simple title to [the lands described in tract register], subject however, to existing easements and gravel and gold outstanding in third parties and for public roads and highways, public utilities, railroads and pipelines.

Acquisition of severed minerals does not require a non-standard estate provided that the mineral acquisition plus the fee less severed minerals acquisition equals fee acquisition. For tracts acquired with minerals outstanding in third parties, that language is added to the standard subject to language in the fee estate:

Fee Simple Title of Severed Minerals

The fee simple title to [the lands described in tract register], the gravel and gold, subject however, to existing easements and for public roads and highways, public utilities, railroads and pipelines.

Road Easement

A (perpetual [exclusive] [non-exclusive] and assignable) (temporary) easement and right-of-way in, on, over and across (the land described in Tract Register) for the location, construction, operation, maintenance, alteration replacement of (a) road(s) and appurtenances thereto; together with the right to trim, cut, fell and remove therefrom all trees, underbrush, obstructions and other vegetation, structures, or obstacles within the limits of the right-of-way; (reserving, however, to the owners, their heirs and assigns, the right to cross over or under the right-of-way as access to their adjoining land at the locations indicated in schedule B); subject, however, to existing easements for public roads and highways, public utilities, railroads and pipelines.

Non Standard Estate

Lease

The California State Land Commission will require a lease executed by the NFS for work on their jurisdictional lands prior to solicitation of a construction contract. HQ approval will be sought separately from this Real Estate Plan as soon as the exact boundaries of the lands needed are known. Time has been incorporated into the PED schedule to execute and approve the lease. The following items will be required to complete a lease:

- Standard Application for Lease of State Lands
- Project information (Scope of work, technical data, timeline, map, etc.)
- SAP (Sample & Analysis Plan)
- SAR (Sample & Analysis Report)
- DMMO authorization letter to dredge
- Bathymetric survey
- Permits from other regulatory agencies
- Minimum expense deposit: \$3,000+ (may vary, based on environmental and engineering review needs)
- Non-refundable filing fee: \$25
- Recent photos (approx. 5 or 6 photos taken within the past 6 months)

7. Description of any Existing Federal Projects in or Partially in the Proposed Project

There are no federal projects located in the proposed construction footprint.

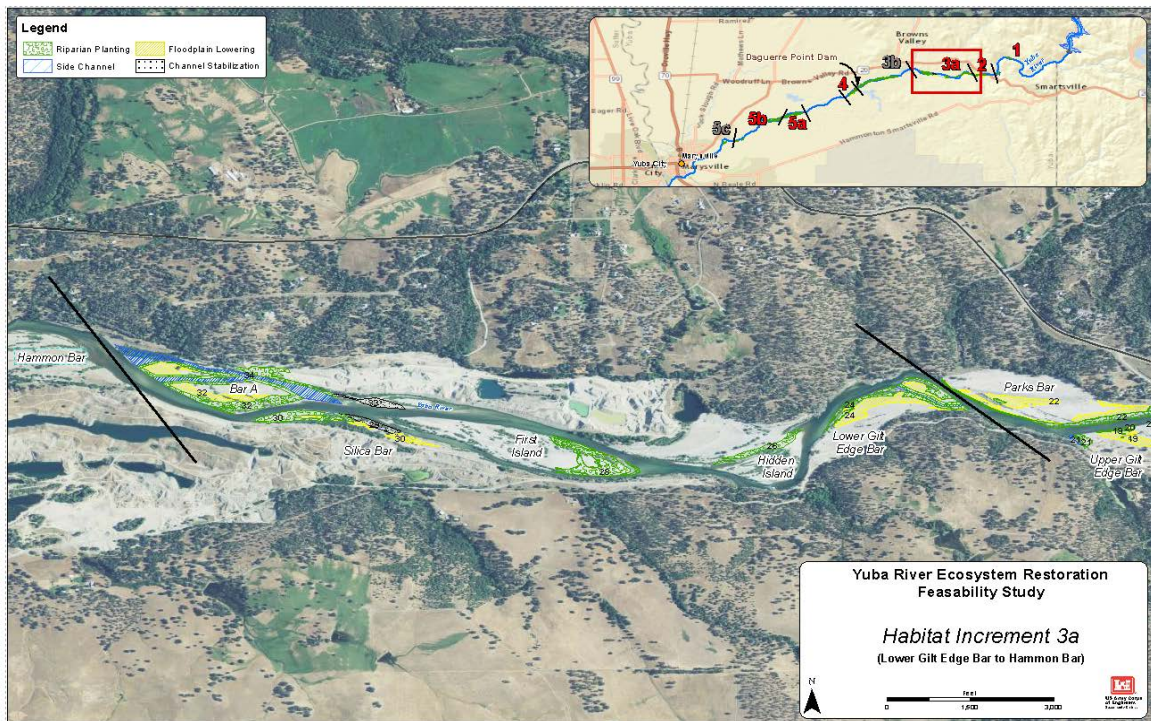
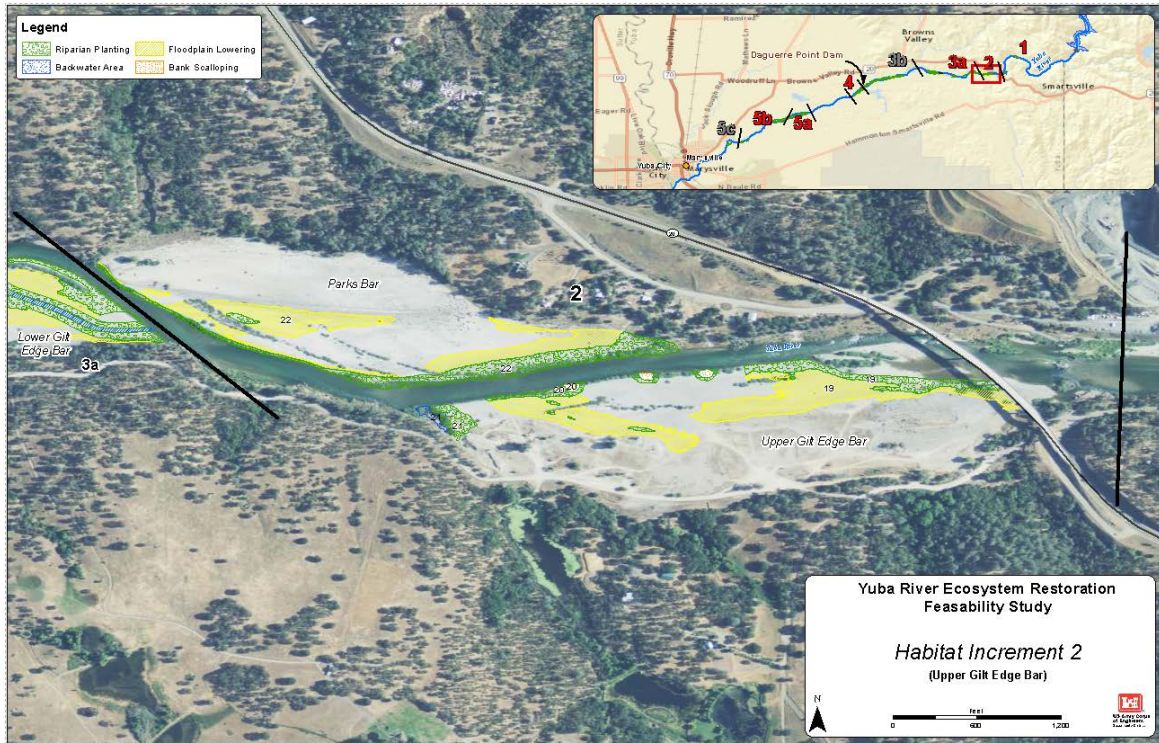
8. Description of any federally owned Land needed for the Project

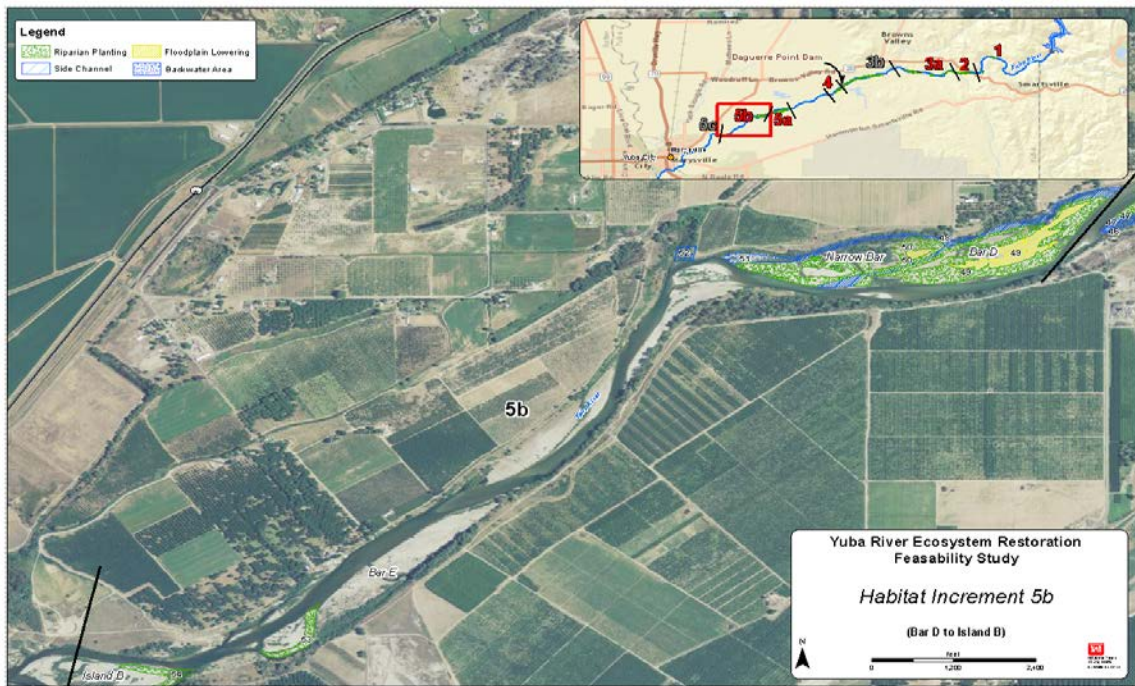
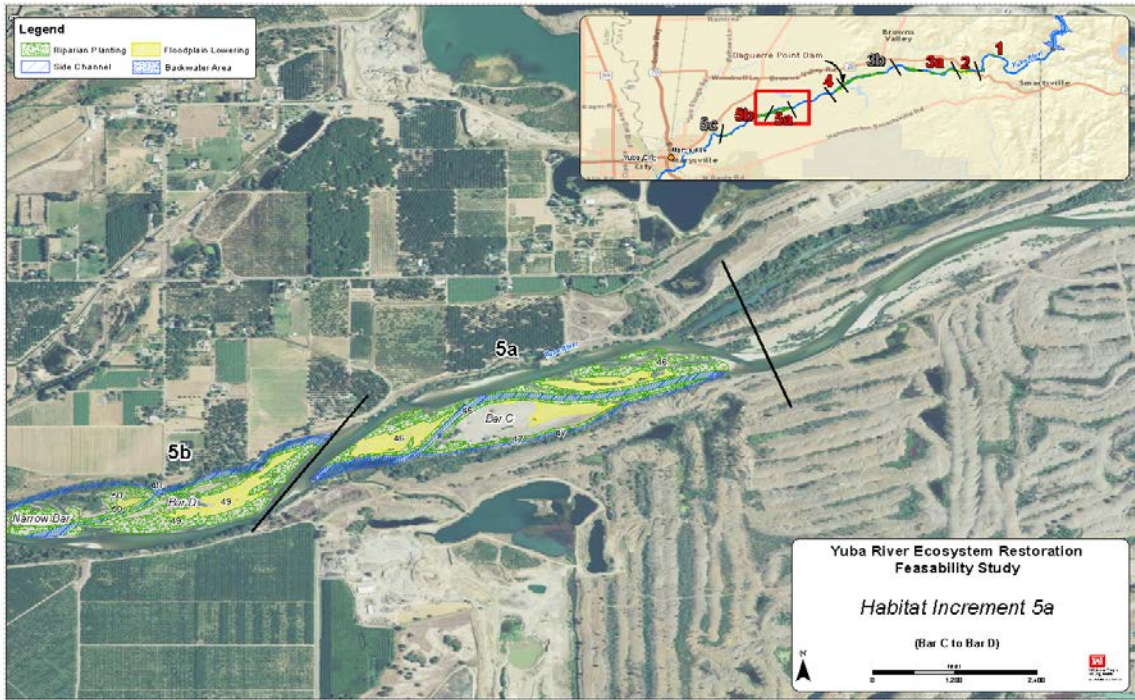
There is one federal parcel needed for a small portion of haul route. The assessor's office identified the parcel in trust with the USA. The adjacent parcels are managed by the Bureau of Land Management. The Bureau is currently researching the township and range location to confirm they are managing the parcel. There is enough acreage in the area to design around the parcel if needed.

9. Application of Navigational Servitude to the LERRDs Requirement

Navigational servitude will not be invoked for this ecosystem restoration study. The Sponsor's should engage and coordinate with the State of California Lands Commission which has jurisdiction over the bed of all state navigable waterways up to the high water mark. Acquiring a State Lands Commission lease will also trigger engagement with the CA Department of Fish and Wildlife which issues stream bed alteration agreements. The Non Federal Sponsor will be required to obtain both a State Lands Commission lease and a stream bed alteration agreement.

10. Project Maps





11. Anticipated Increased Flooding and Impacts

Project features would not affect the ability of the river to access high floodplain nor would it affect the hydrology of the watershed and therefore would not result in significant effects to this resource. Based on hydraulic modeling results, there will be no increased flooding from the proposed project.

12. Cost Estimate

The following is a preliminary analysis estimating the costs of acquiring the required LERRDs to support the USACE Recommended Plan to assist in the determination of federal interest for a cost benefit analysis. The format and level of investigation of this cost estimate is considered to be consistent with, and meet the intent of, the Real Estate Policy Guidance Letter No. 31-Real Estate Support to Civil Works Planning Paradigm (3X3X3). This policy letter states that “For projects in which the value of real estate (lands, improvements, and severance damages) are not expected to exceed **ten percent** of total project costs (total cost to implement project), a cost estimate (**or rough order of magnitude**) will be acceptable for purposes of the feasibility phase.” The table below estimates the costs associated with acquiring real property interests necessary to construct, operate and maintain the proposed project. The date of the approved cost estimate was October 29, 2018.

Table 2 – Cost Table

Plan Features	Cost	Incremental Costs	Total Costs Rounded
Code of Accounts 01	FEDERAL		
Fed RE Admin Account 01	\$926,344	(5%) \$48,750	\$975,000
01	NON FEDERAL		
Fee Take Area	\$3,166,718	(50%) \$1,583,359	\$4,750,000
Permanent Road Easement/Haul Routes	\$405,280	(50%) \$202,640	\$608,000
Temporary Work Area Easements (Staging and Bridges)	\$43,003	(50%) \$21,501	\$65,000
Lands and Damages Total	\$3,616,001	\$1,807,501	\$5,423,000
Non Fed RE Admin	\$2,535,000	(5%) \$126,750	\$2,662,000
		TOTAL FED & NON FED LERRDS (Rounded)	\$9,060,000

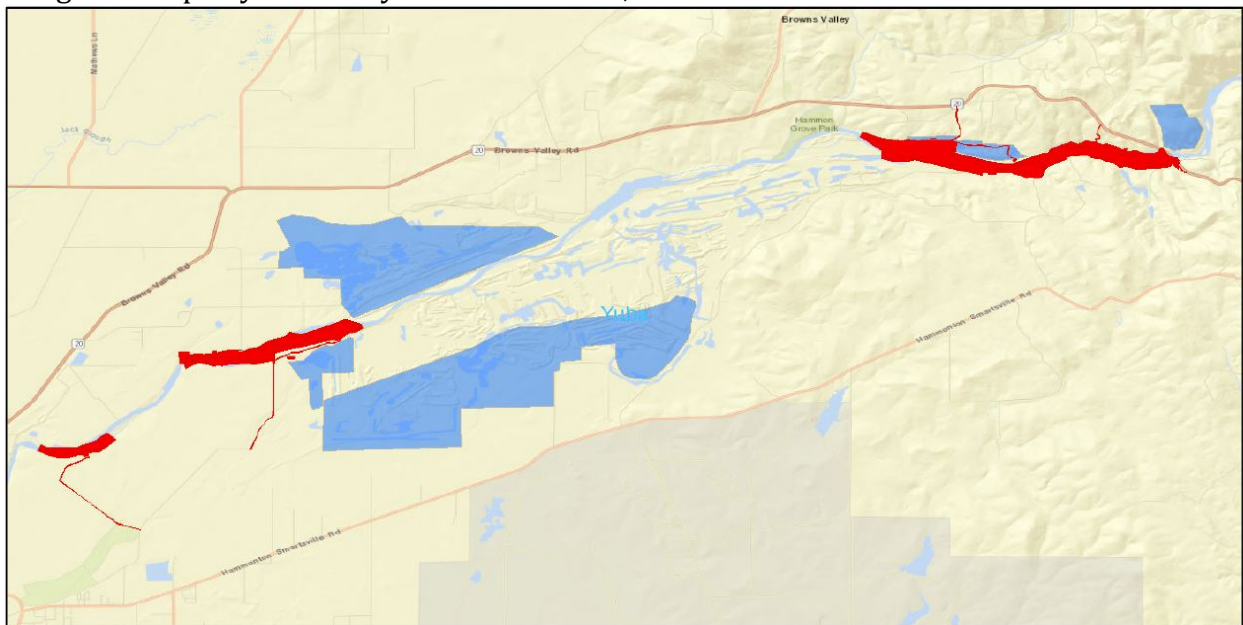
13. Relocation Assistance Benefits.

The non-Federal sponsors must comply with the Uniform Relocation Assistance and Real Properties Acquisition Policies Act of 1970, as amended, 42 U.S.C. 4601 *et seq.* (P.L. 91-646, “the Uniform Act”) and provide relocation assistance to qualifying residences and businesses within the project area that are displaced, as defined in the Uniform Act, as a consequence of USACE project implementation. Presently, no displacements are anticipated as a consequence of implementation of the Recommended Plan.

14. Mineral / Timber Activity.

The value of mineral rights in the project area has been researched to a greater extent than in the original cost estimate. Research was conducted on both private and federally owned minerals in the project area. Research was completed reviewing real estate data bases, contact with gravel extraction experts, state, and Federal regulatory agencies, in an effort to estimate the values of gravel pits that will be affected by the project. The analysis did not address potential encumbrances or limitations created by potential cultural resource or contamination issues.

There are six operating permitted gravel pits located near the project footprint shown in the blue on the map below. Only one appears to be impacted by the project – the Long Bar Property owned by Silica Resources, Inc.



Research on regional market for sales and listing of gravel pits was completed. Sales of properties whose primary use would be for sand, gravel, or other mineral extraction were reviewed.

Unit prices vary widely for gravel pits as they are affected by varying locational influences. There are a number of factors affecting value, - competing land values, access and proximity to mineral material markets, type of mineral material, remaining mineral quantities on subject and comparable properties. It is outside the scope of this cost estimate to perform a detailed analysis of all these factors.

Analysis was also completed for quantities and values of gravel material being extracted in the project area and surveyed gravel royalty values in the California market in an effort to estimate the present in place value of gravel.

The California Office of Mine Reclamation inspection reports were analyzed on the nearby operating gravel pits. The reports provide estimates of annual production in tons, and projected production period in years. Higher discount rates apply to mineral bearing property due to risks in estimated quality and quantity estimates, commodity price changes, regulatory compliance issues, and relatively long production periods. Suggested discount rates apply to royalty income streams in the research ranged from 10-15%. A lower rate usually applies to a passive interest with little or no capital outlays. BLM uses a discount rate. Our analysis used a discount rate of 12%. Using the above royalty rate information,

Based on the mineral interest data, \$35,000 per acre is estimated for operating and potential gravel pit properties that are impacted by the project.

There is no timber harvesting in the project footprint.

15. Non-Federal Sponsor's Ability to Acquire.

The non-Federal sponsor has capability and resources for acquiring real estate for this project as indicated by their assessment shown in Exhibit A.

16. Zoning Anticipated in Lieu of Acquisition.

There is no zoning in lieu of acquisition planned in connection with the project.

17. Acquisition Schedule.

The non-Federal sponsors will be directed to begin real property acquisition for the project only after the PPA is fully executed. A risk letter was sent from the Corps to the Yuba County Water District alerting them to the risks associated with purchasing project lands in advance of the PPA execution in November 2017. The construction contracts extend out four years.

REAL ESTATE ACQUISITION SCHEDULE				
Project Name: Yuba River Ecosystem Restoration Study Contracts	COE Start	COE Finish	NFS Start	NFS Finish
Receipt of preliminary drawings from Engineering/PM	07/2017	11/2017		
Receipt of final drawings from Engineering/PM	11/2017	02/2019		
Execution of PPA/Finalize Chief's Report	July 2019			
PED Nov 2019 – Nov 2022 Formal transmittal of final drawings & instruction to acquire LERRDS	2019	2022	2019	2022
Years for Construction Sequence and Duration				
Year 1	05/2021			
Year 2	05/2022			
Year 3	05/2023			
Year 4	05/2024			
Conduct Landowner Meetings			2019	2022
Prepare/review mapping & legal descriptions			2019	2022
Obtain/review title evidence			2019	2022
Obtain/review tract appraisals			2019	2022
Conduct negotiations			2019	2022
Certify all necessary LERRDS are available for construction			2019	2022
Prepare and submit credit requests			2022	2026
Review/approve or deny credit requests	2022	2026		

18. Description of Facility and Utility Relocations.

There are no utility facility relocations required for this project.

ANY CONCLUSION OR CATEGORIZATION CONTAINED IN THIS REPORT THAT AN ITEM IS A UTILITY OR FACILITY RELOCATION TO BE PERFORMED BY THE NON-FEDERAL SPONSOR AS PART OF ITS LERRD RESPONSIBILITIES IS PRELIMINARY ONLY. THE GOVERNMENT WILL MAKE A FINAL DETERMINATION OF THE

RELOCATIONS NECESSARY FOR THE CONSTRUCTION, OPERATION, OR MAINTENANCE OF THE PROJECT AFTER FURTHER ANALYSIS AND COMPLETION AND APPROVAL OF FINAL ATTORNEY'S OPINIONS OF COMPENSABILITY FOR EACH OF THE IMPACTED UTILITIES AND FACILITIES.

19. Hazardous, Toxic, and Radiological Waste (HTRW).

A Phase I Environmental Site Assessment was performed in conformance with the scope and limitations of ASTM Practice E 1527-13 for the Yuba River Ecosystem Restoration by the Environmental Design Section. This assessment has revealed no Recognized Environmental Conditions in connection with the project site.

No Recognized Environmental Conditions were observed on the Yuba River Ecosystem Restoration project boundaries. All of the adjacent properties appeared well maintained and clean during the site visit. The material threat of any hazardous substances release is very small. The records research report and site visit indicates that there are no Recognized Environmental Conditions within or adjacent to the proposed restoration property.

19. Attitude of Landowners

Residents and various groups and organizations attended the public meetings held in 2016. Some attendees were very supportive of the project and some property owners who would be directly impacted by the project footprint vocally opposed the project. Sufficient time has been built into the schedule to avoid project delays for opposition during the acquisition process.

Prepared by:

Laurie Parker

Laurie Parker
Realty Specialist

Reviewed and Approved by:

Adam B. Olson
Chief, Real Estate Division

EXHIBIT A

ASSESSMENT OF NON-FEDERAL SPONSOR'S REAL ESTATE ACQUISITION
CAPABILITY
YUBA RIVER ECOSYSTEM FEASIBILITY STUDY

SPONSOR: Yuba County Water Agency

I. Legal Authority:

a. Does the sponsor have legal authority to acquire and hold title to real property for project Purposes?

Yes. Yuba County Water Agency was formed and exists under the Yuba County Water Agency Act (West Water Code Appendix chapter 84). Section 3.5 of the Act authorizes the Agency to acquire, hold, and use real property for Agency purposes, which includes purposes relating to the Yuba River Ecosystem Feasibility Study and related restoration projects.

b. Does the sponsor have the power of eminent domain for this project?

Yes. See section 3.4 of the Yuba County Water Agency Act and the California Eminent Domain Law at California Code of Civil Procedure sections 1230.010 - 1273.050.

c. Does the sponsor have "quick-take" authority for this project?

By "quick-take," the Agency assumes that the Corps means an eminent domain process by which the government takes possession of the condemned land before the final adjudication of compensation. Yes, the California Eminent Domain Law authorizes the condemning agency to request the court to approve an order for possession of the subject property (prior to final judgment) upon demonstrating a right to take and payment of a just compensation deposit. If the court approves the order for possession, the condemning agency may take possession of the property during the pendency of the eminent domain lawsuit and the final compensation to be paid to the landowner will be determined in subsequent court proceedings.

d. Are any of the lands/interests in land required for the project located outside the sponsor's Political boundary?

No. The proposed ecosystem restoration projects are located within the Yuba County portion of the Yuba River watershed, which is within the Agency's jurisdictional boundaries.

e. Are any of the lands/interests in land required for the project owned by an entity whose property the sponsor cannot condemn?

Maybe. The Agency lacks the authority to condemn real property owned by the federal government, but we are not aware of any federally owned land within the area of the proposed ecosystem restoration projects. However, the Agency has not conducted a thorough title and ownership review of the lands within the ecosystem restoration area. *Note: If the one newly identified Federal property referenced on Page 12 paragraph 8 is needed the sponsors would not be able to condemn.*

II. Human Resource Requirements:

a. Will the sponsor's in-house staff require training to become familiar with the real estate requirements of Federal projects including P.L. 91-646, as amended?

At this time, the Agency does not believe that it will need to undertake any staff training. If any of the real property acquisition for the project requires relocation assistance, then the Agency likely would retain a relocation consultant to advise regarding compliance with the federal requirements.

b. If the answer to a. is "yes," has a reasonable plan been developed to provide such training?

Not applicable.

c. Does the sponsor's in-house staff have sufficient real estate acquisition experience to meet its responsibilities for the project?

Yes. However, the Agency in-house staff would be assisted by its general counsel (which is retained through a services agreement with a law firm) and a local title company. The Agency also may retain as needed a surveyor, appraiser, or right-of-way consultant.

d. Is the sponsor's project in-house staffing level sufficient considering its other workload, if any, and the project schedule?

Yes.

e. Can the sponsor obtain contractor support, if required, in a timely fashion?

Yes. The Agency is a small government agency with the ability to quickly approve consultant and contractor agreements as needed from time to time and the Agency General Manager has broad contracting authority.

f. Will the sponsor likely request USACE assistance in acquiring real estate?

No. At this time, the Agency does not plan on requesting such assistance.

III. Other Project Variables:

a. Will the sponsor's staff be located within reasonable proximity to the project site?

Yes. The Agency administrative staff are located in Marysville, California, which is close to the proposed ecosystem restoration project areas.

b. Has the sponsor approved the project real estate schedule/milestones?

Sponsor will review real estate and milestone schedule after DQC and legal reviews are complete.

IV. Overall Assessment:

a. Has the sponsor performed satisfactorily on other USACE projects?

Yes. To the best of the Agency's knowledge, it has performed satisfactorily on other USACE projects and it is not aware of any complaints or concerns from the USACE.

b. With regard to this project, the sponsor is anticipated to be:

Fully capable of meeting legal and land acquisition requirements for this project.

V. Coordination:

a. Has this assessment been coordinated with the sponsor?

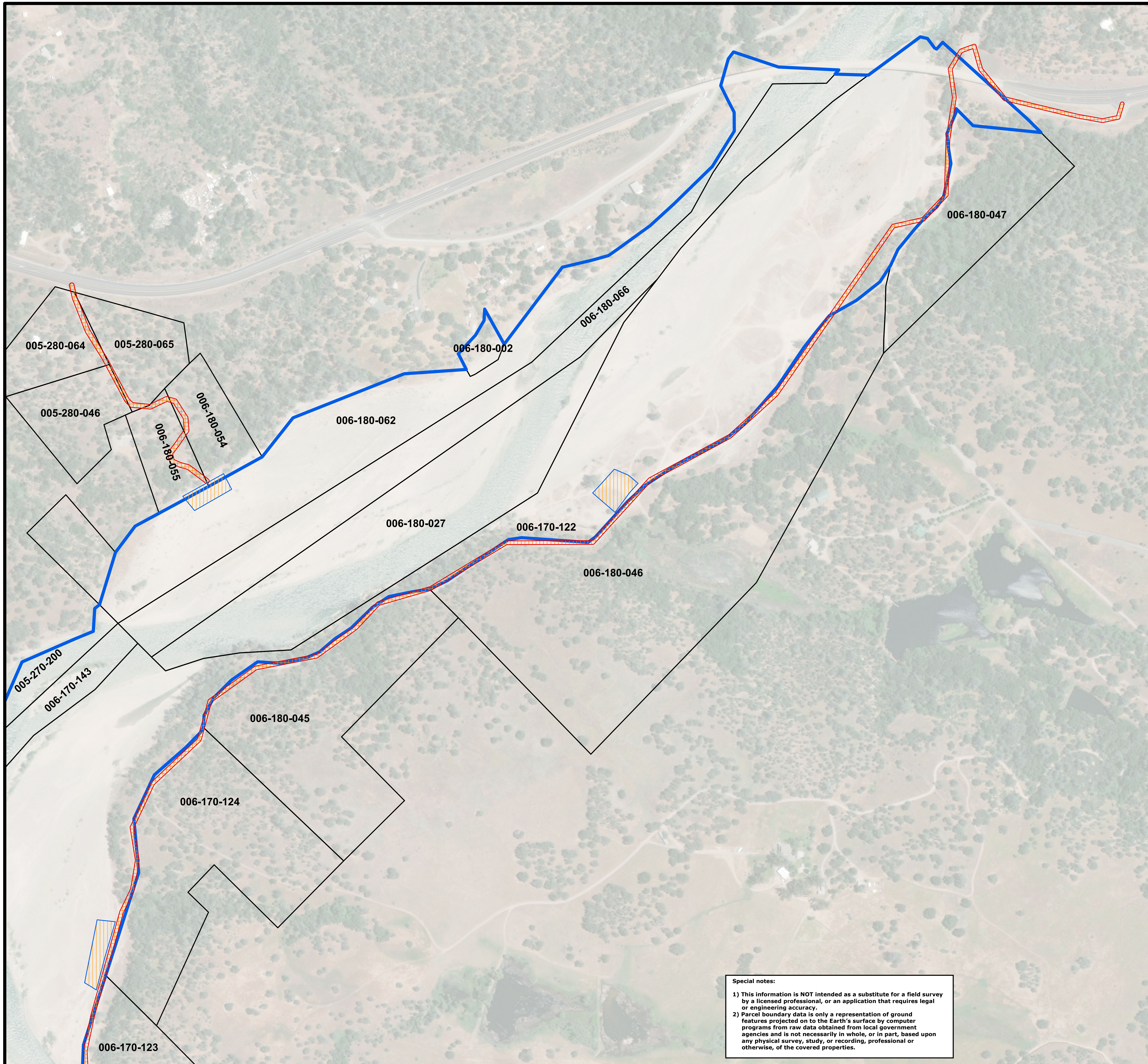
Yes. This assessment has been reviewed with and approved by the sponsor.

b. Does the sponsor concur with this assessment?

Yes.

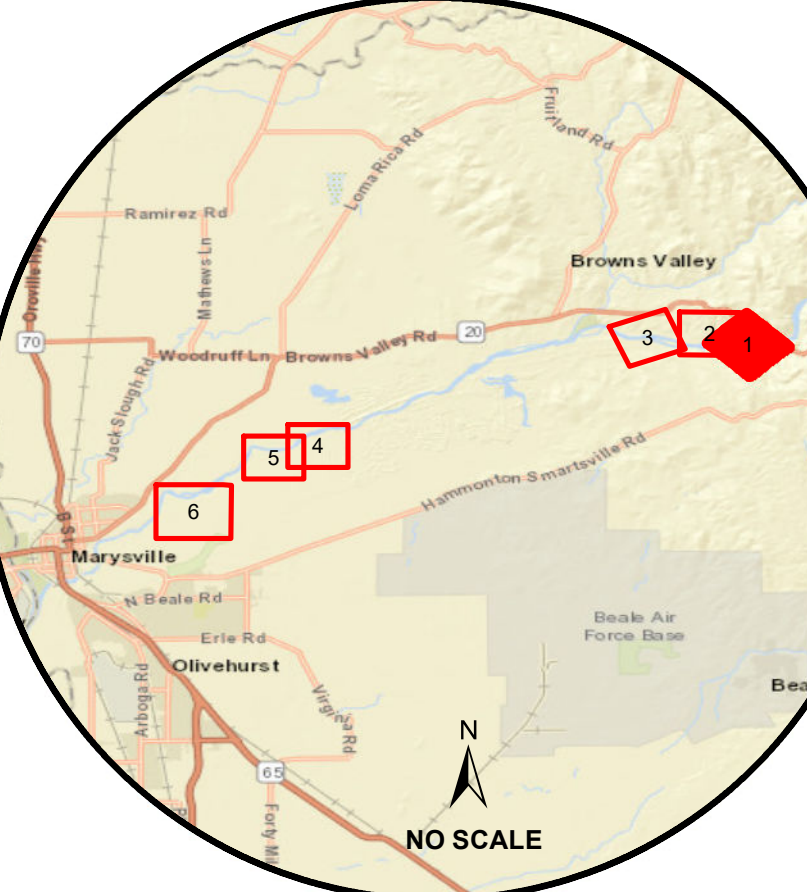
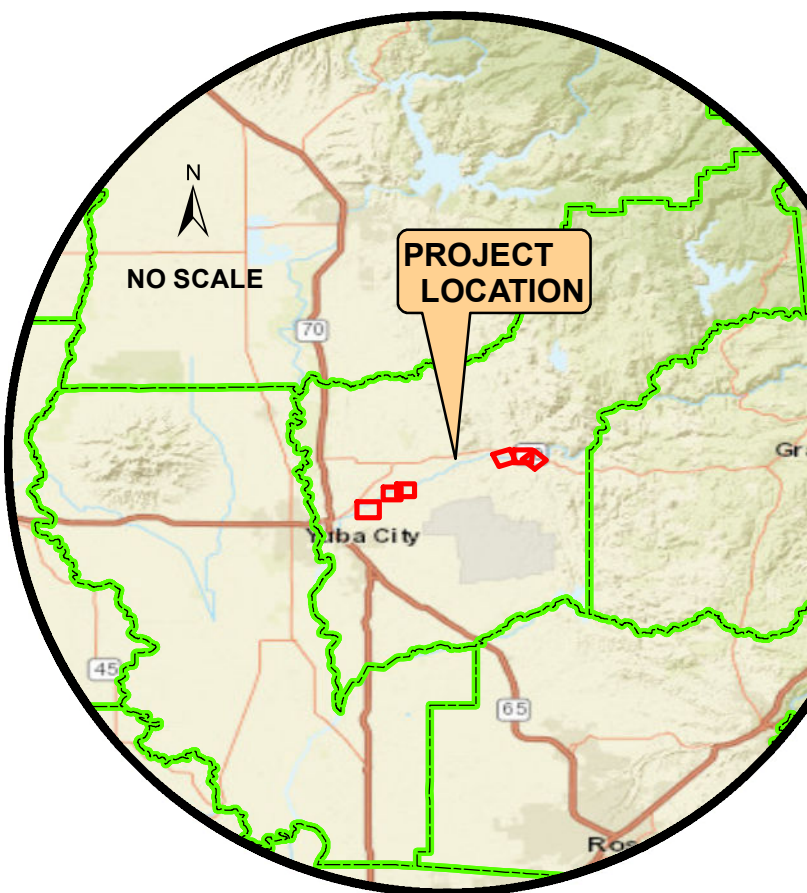
Signature: 
Yuba County Water Agency

EXHIBIT B – CADASTRAL MAP AND MINERAL MAP



Special notes:

- 1) This information is NOT intended as a substitute for a field survey by a licensed professional, or an application that requires legal or engineering accuracy.
- 2) Parcel boundary data is only a representation of ground features projected on to the Earth's surface by computer programs from raw data obtained from local government agencies and is not necessarily in whole, or in part, based upon any physical survey, study, or recording, professional or otherwise, of the covered properties.



FINAL
As Applicable

PROJECT MAP

DEPARTMENT OF THE ARMY
USING SERVICE U.S. ARMY

LOCATION OF PROJECT

STATE CALIFORNIA
COUNTY YUBA COUNTY
DIVISION SOUTH PACIFIC DIVISION (SPD)
DISTRICT SACRAMENTO (SPK)
ARMY AREA 6TH ARMY
13 Miles N.E. OF YUBA CITY
43 Miles N. OF SACRAMENTO

TRANSPORTATION FACILITIES

FEDERAL ROADS US HWY 5
STATE ROADS STATE HWY 70/99
AIRPORTS SACRAMENTO INT. AIRPORT

ACQUISITION

TOTAL ACRES ACQUIRED See T.A.R.
FEE See T.A.R.
PUBLIC DOMAIN (WITHDRAWN) See T.A.R.
USE PERMIT (Other than P.D.)
TRANSFER (WITHDRAWN) USE PERMIT
LEASE NONE
EASEMENT RESERVED IN FEE DISPOSAL
LESSER INTERESTS (EASEMENT) PERMIT LICENSE

DISPOSAL

TOTAL ACRES DISPOSED NO AREA
SOLD
PUBLIC DOMAIN (WITHDRAWN) USE PERMIT
USE PERMIT (Other than P.D.)
TRANSFERRED (FEE)
LEASES TERMINATED
LESSER INTERESTS TERM
REASSIGNED
ACRES TO

METADATA
Townships/Ranges:
005,0011E
of the Mount Diablo Baseline & Meridian.

1:2,400
1 inch = 200 feet

Feet
0 200 400 600 800

Coordinate System:
NAD 1983 2011 StatePlane California II FIPS 0402 Ft US
Projection: Lambert Conformal Conic
Datum: NAD 1983 2011
Units: Foot US

ACQUISITION AUTHORIZATION

- LEGEND**
- EXCEPT FOR SPECIAL SYMBOLS SHOWN BELOW, MAP SYMBOLS ARE STANDARD IN U.S. ARMY FIELD MANUAL, FM 21-31, TOPOGRAPHIC SYMBOLS, DATED DECEMBER 1968.
- STAGING
 - TWAE
 - HAUL ROUTE
 - FOOTPRINT
 - DISPOSAL SITE

REAL ESTATE OWNERSHIP MAPS 2017

DEPARTMENT OF THE ARMY
OFFICE OF THE SACRAMENTO DISTRICT ENGINEER
SOUTH PACIFIC DIVISION

CARTOGRAPHER J. HENRIKSEN YUBA COUNTY CALIFORNIA
CARTO TECH. _____
CHECKED BY _____

SUBMITTED BY
STEVE J. CAREY
LEAD, CADASTRAL TEAM

RECOMMENDED BY
JAMES M. OLIVER
CHIEF, GEOMATICS SECTION

APPROVED BY _____ DATE _____
DIANE M. SIMPSON
CHIEF, REAL ESTATE DIVISION

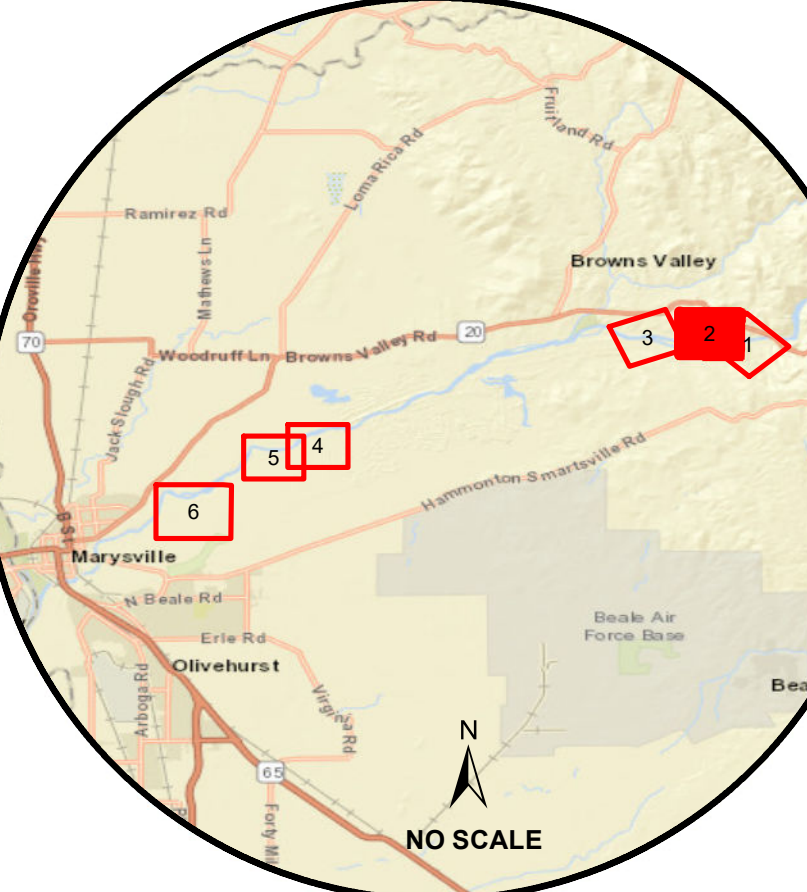
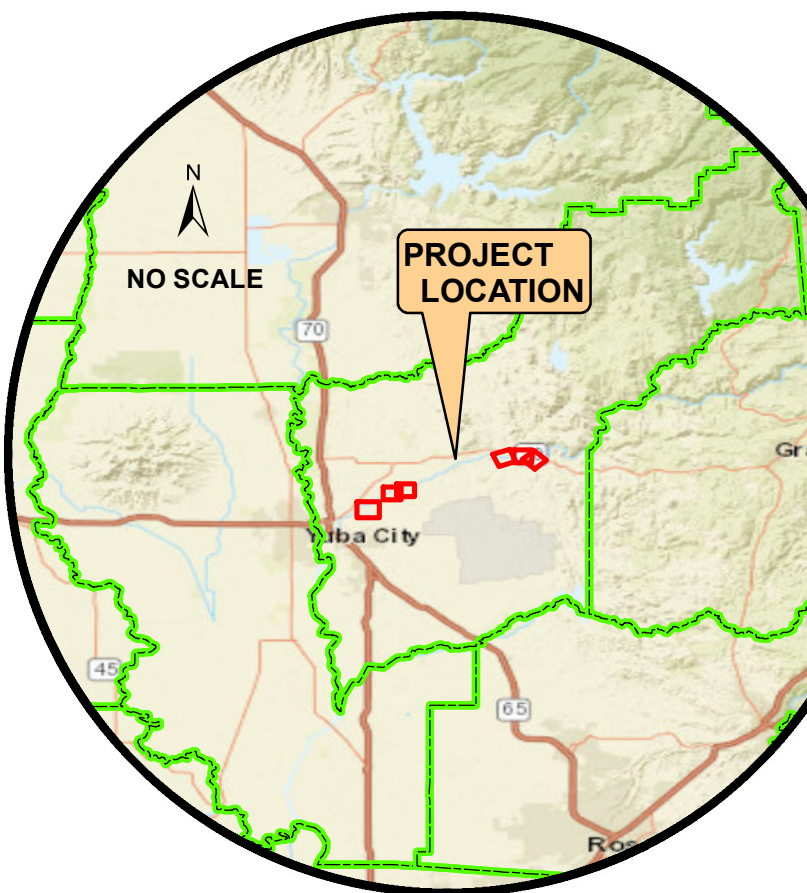
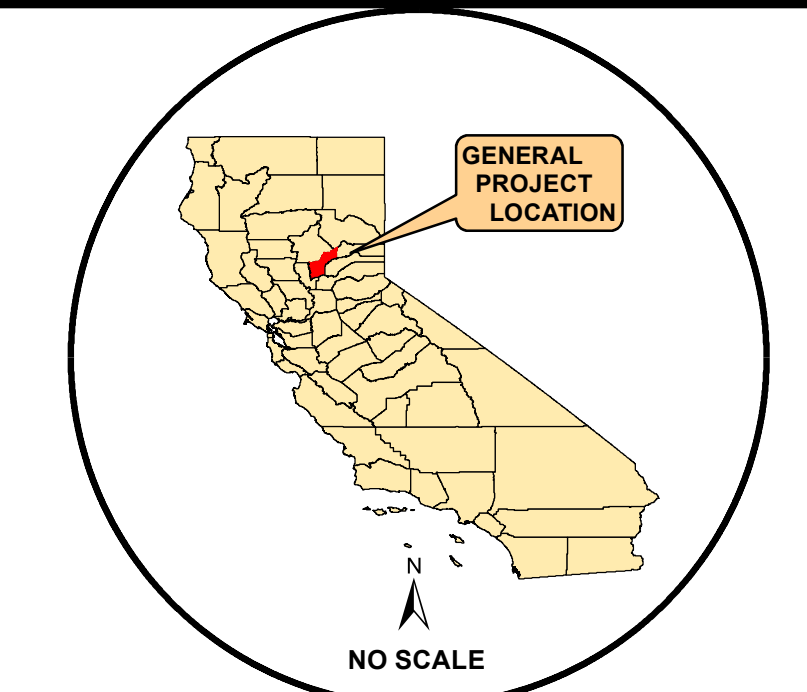
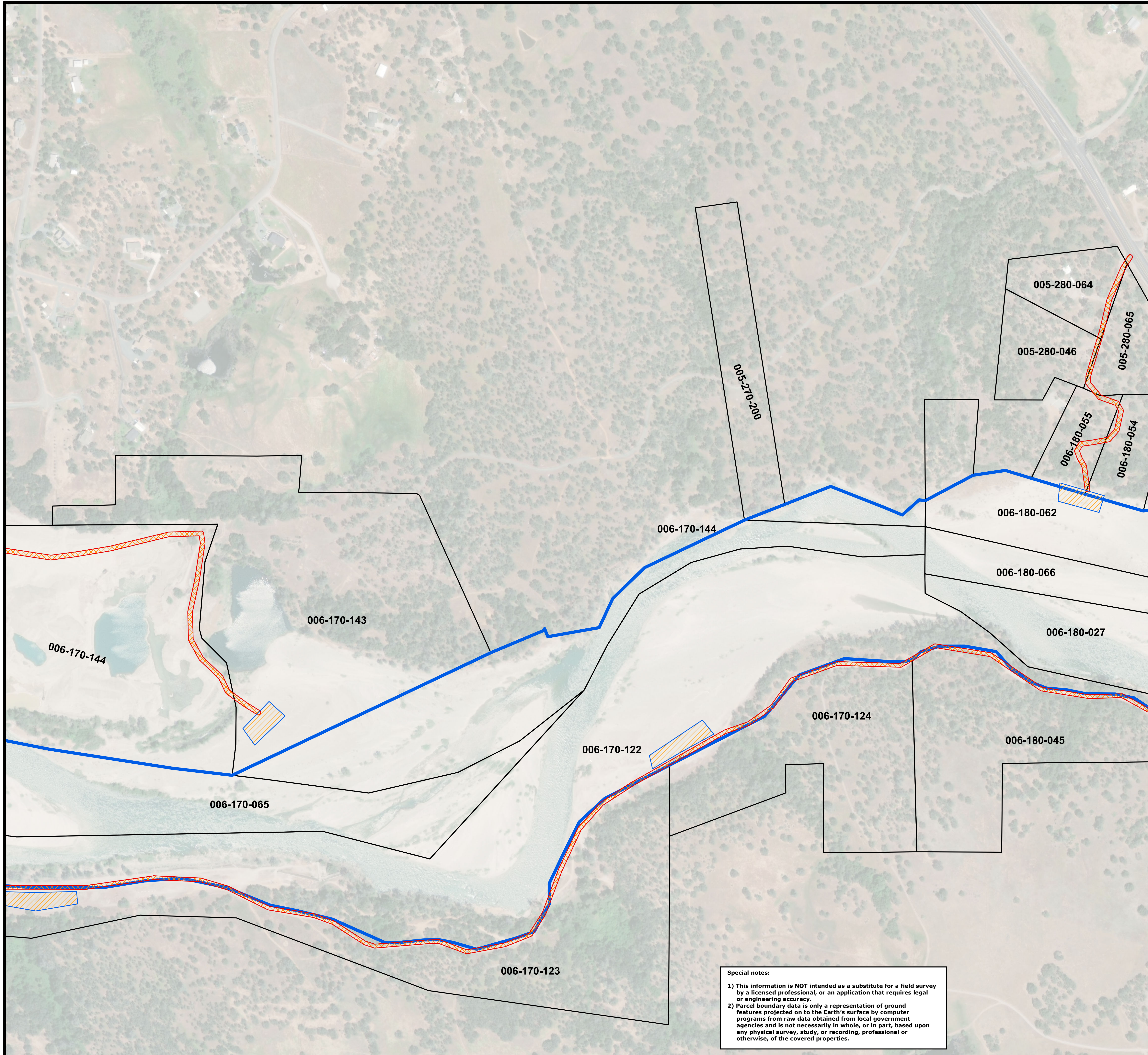
OFFICE, CHIEF OF ENGINEERS, WASHINGTON 25, D.C.
REMISS CODE: _____
REMISS UNIQUE ID: _____
INSTALLATION OR PROJECT NO. _____

ENGINEERING GEOMATICS SECTION - CADASTRAL TEAM
YUBA RIVER ECOSYSTEM RESTORATION FEASIBILITY STUDY HABITAT INCREMENTS 2, 3A, 5A & 5B

Date Saved: 8/23/2018 4:08:36 PM
This sheet originally formatted to ARCH_E1_30"x42".

SHEET 01 OF 07 DRAWING NO. _____

Path: S:\3_SPK\Yuba_Goldfields\Projects\Eco_Restorations_2017\00180816_VREF\FMS.mxd



FINAL
As Applicable

PROJECT MAP

DEPARTMENT OF THE ARMY
USING SERVICE U.S. ARMY

LOCATION OF PROJECT

STATE CALIFORNIA
COUNTY YUBA COUNTY
DIVISION SOUTH PACIFIC DIVISION (SPD)
DISTRICT SACRAMENTO (SPK)
ARMY AREA 6TH ARMY
13 Miles N.E. OF YUBA CITY
43 Miles N. OF SACRAMENTO

TRANSPORTATION FACILITIES

FEDERAL ROADS US HWY 5
STATE ROADS STATE HWY 70/99
AIRPORTS SACRAMENTO INT. AIRPORT

ACQUISITION

TOTAL ACRES ACQUIRED See T.A.R.
FEE See T.A.R.
PUBLIC DOMAIN (WITHDRAWN) See T.A.R.
USE PERMIT (Other than P.D.) USE PERMIT
TRANSFER (WITHDRAWN) USE PERMIT
LEASE NONE
EASEMENT RESERVED IN FEE DISPOSAL
LESSER INTERESTS (EASEMENT) PERMIT (LICENSE)

DISPOSAL

TOTAL ACRES DISPOSED NO AREA
SOLD
PUBLIC DOMAIN (WITHDRAWN) USE PERMIT
USE PERMIT (Other than P.D.)
TRANSFERRED (FEE)
LEASES TERMINATED
LESSER INTERESTS TERM
REASSIGNED
ACRES TO

METADATA
Townships/Ranges:
005,0011E
of the Mount Diablo Baseline & Meridian.

N
1:2,400
1 inch = 200 feet

Feet
0 200 400 600 800

Coordinate System:
NAD 1983 2011 StatePlane California II FIPS 0402 Ft US
Projection: Lambert Conformal Conic
Datum: NAD 1983 2011
Units: Foot US

LEGEND

EXCEPT FOR SPECIAL SYMBOLS SHOWN BELOW,
MAP SYMBOLS ARE STANDARD IN U.S. ARMY
FIELD MANUAL, FM 21-31, TOPOGRAPHIC SYMBOLS,
DATED DECEMBER 1968.

- STAGING
- TWAE
- HAUL ROUTE
- FOOTPRINT
- DISPOSAL SITE

ACQUISITION AUTHORIZATION

REAL ESTATE OWNERSHIP MAPS 2017

DEPARTMENT OF THE ARMY
OFFICE OF THE SACRAMENTO DISTRICT ENGINEER
SOUTH PACIFIC DIVISION

CARTOGRAPHER J. HENRIKSEN YUBA COUNTY CALIFORNIA
CARTO TECH. _____
CHECKED BY _____

SUBMITTED BY _____
STEVE J. CAREY
LEAD, CADASTRAL TEAM

RECOMMENDED BY _____
JAMES M. OLIVER
CHIEF, GEOMATICS SECTION

APPROVED BY _____ DATE _____
DIANE M. SIMPSON
CHIEF, REAL ESTATE DIVISION

OFFICE, CHIEF OF ENGINEERS, WASHINGTON 25, D.C.
REVIS CODE: _____
REVIS UNIQUE ID: _____
INSTALLATION OR PROJECT NO. _____

ENGINEERING GEOMATICS SECTION -
CADASTRAL TEAM
**YUBA RIVER ECOSYSTEM RESTORATION
FEASIBILITY STUDY
HABITAT INCREMENTS 2, 3A, 5A & 5B**

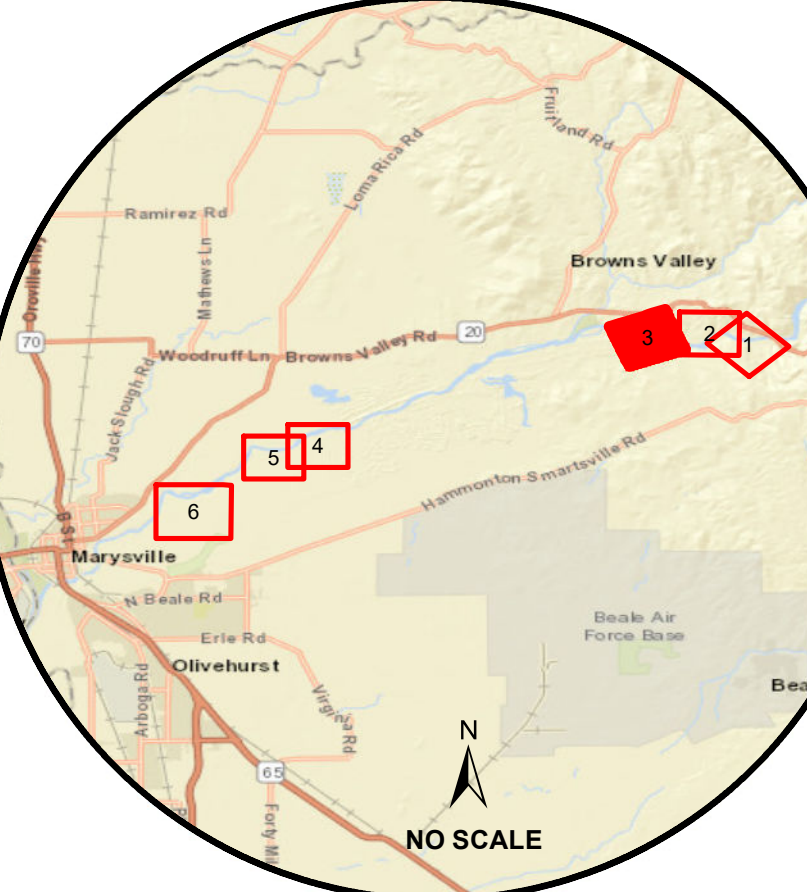
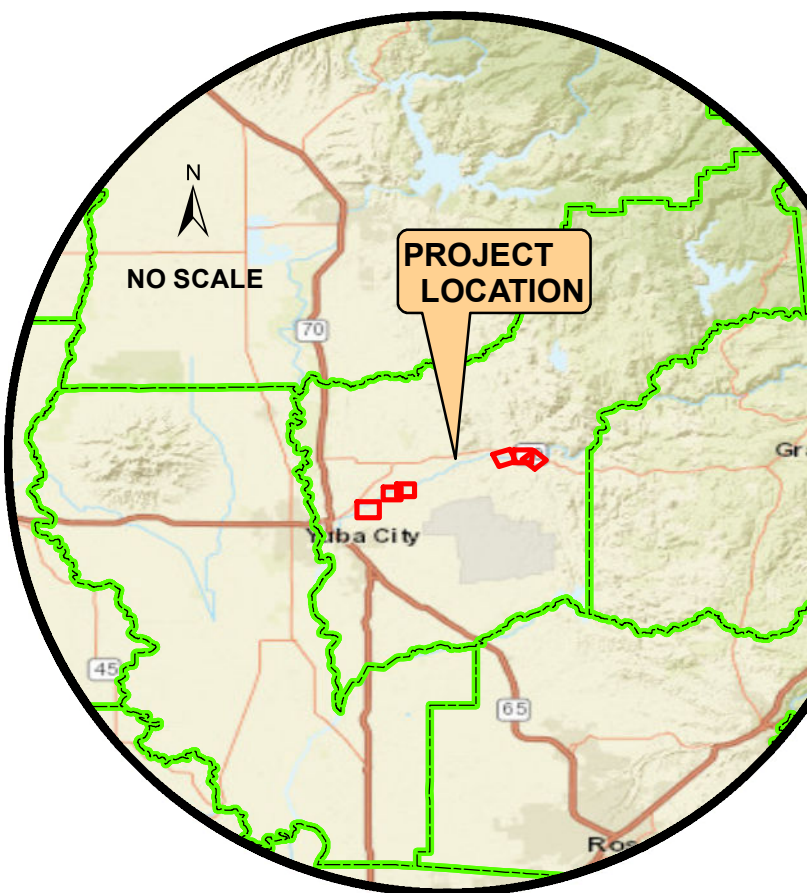
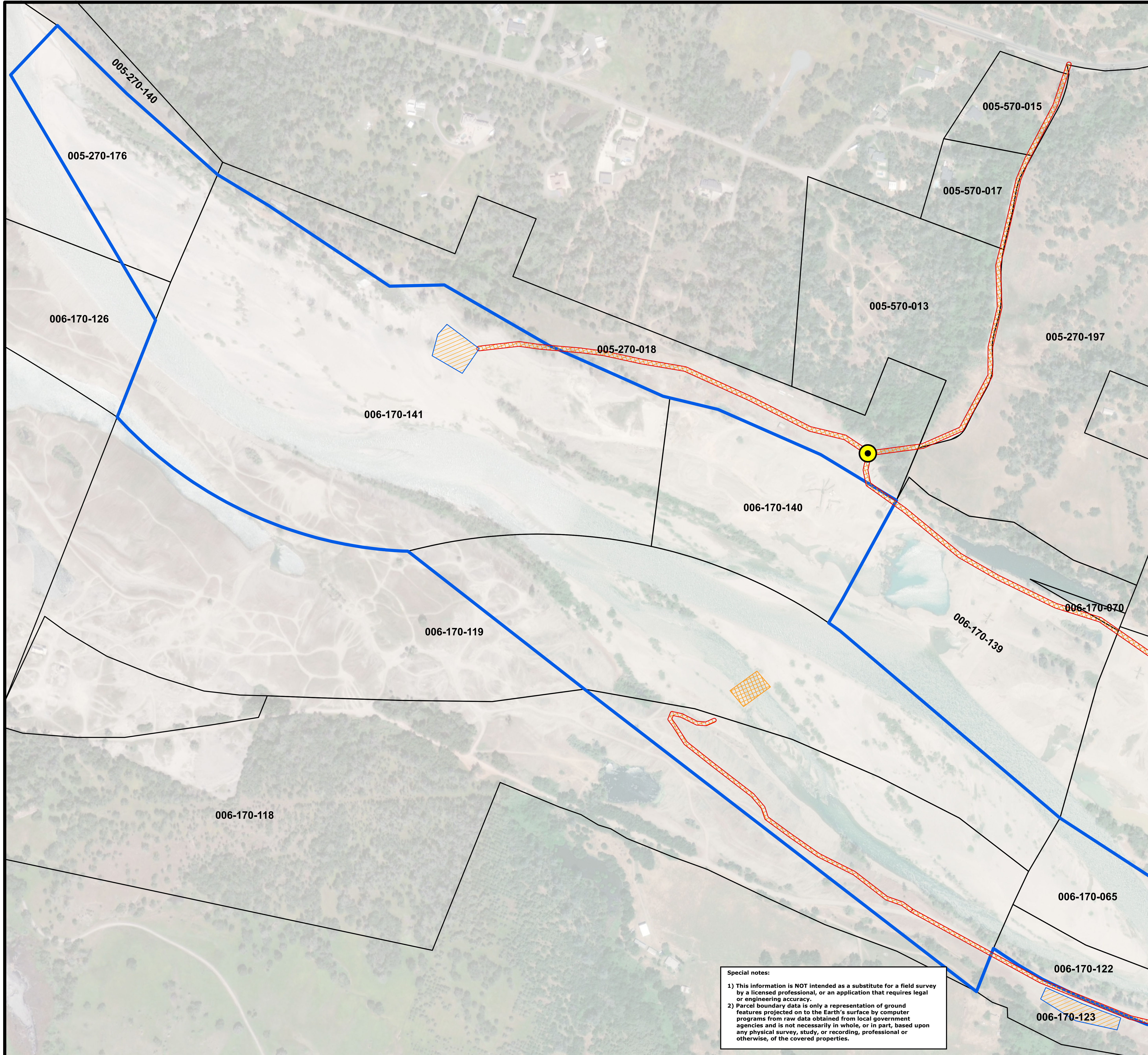
Date Saved: 8/23/2018 4:08:36 PM
This sheet originally formatted to ARCH_E1_30"x42".

SHEET 02 OF 07 DRAWING NO. _____

Special notes:

- 1) This information is NOT intended as a substitute for a field survey by a licensed professional, or an application that requires legal or engineering accuracy.
- 2) Parcel boundary data is only a representation of ground features projected on to the Earth's surface by computer programs from raw data obtained from local government agencies and is not necessarily in whole, or in part, based upon any physical survey, study, or recording, professional or otherwise, of the covered properties.

Path: S:\3_SPK\Yuba_Goldfields\Projects\Eco_Restorations_2017\00180816_VPR\FRS.mxd



METADATA
Townships/Ranges:
005,0011E
of the Mount Diablo Baseline & Meridian.

Scale:
1:2,400
1 inch = 200 feet

Coordinate System:
NAD 1983 2011 StatePlane California II FIPS 0402 Ft US
Projection: Lambert Conformal Conic
Datum: NAD 1983 2011
Units: Foot US

Scale Bar:
0 200 400 600 800 Feet

ACQUISITION AUTHORIZATION

FINAL
As Applicable

PROJECT MAP

DEPARTMENT OF THE ARMY
USING SERVICE U.S. ARMY

LOCATION OF PROJECT

STATE CALIFORNIA
COUNTY YUBA COUNTY
DIVISION SOUTH PACIFIC DIVISION (SPD)
DISTRICT SACRAMENTO (SPK)
ARMY AREA 6TH ARMY
13 Miles N.E. OF YUBA CITY
43 Miles N. OF SACRAMENTO

TRANSPORTATION FACILITIES

FEDERAL ROADS US HWY 5
STATE ROADS STATE HWY 70/99
AIRPORTS SACRAMENTO INT. AIRPORT

ACQUISITION

TOTAL ACRES ACQUIRED See T.A.R.
FEE See T.A.R.
PUBLIC DOMAIN (WITHDRAWN) See T.A.R.
USE PERMIT (Other than P.D.) USE PERMIT
TRANSFER (WITHDRAWN) USE PERMIT

LEASE NONE
EASEMENT RESERVED IN FEE DISPOSAL
LESSER INTERESTS (EASEMENT) PERMIT (LICENSE)

DISPOSAL

TOTAL ACRES DISPOSED NO AREA
SOLD
PUBLIC DOMAIN (WITHDRAWN) USE PERMIT
USE PERMIT (Other than P.D.)
TRANSFERRED (FEE)
LEASES TERMINATED
LESSER INTERESTS TERM
REASSIGNED
ACRES TO

LEGEND

EXCEPT FOR SPECIAL SYMBOLS SHOWN BELOW, MAP SYMBOLS ARE STANDARD IN U.S. ARMY FIELD MANUAL, FM 21-31, TOPOGRAPHIC SYMBOLS, DATED DECEMBER 1968.

- STAGING
- TWAE
- HAUL ROUTE
- FOOTPRINT
- DISPOSAL SITE

REAL ESTATE OWNERSHIP MAPS 2017

DEPARTMENT OF THE ARMY
OFFICE OF THE SACRAMENTO DISTRICT ENGINEER
SOUTH PACIFIC DIVISION

CARTOGRAPHER J. HENRIKSEN YUBA COUNTY CALIFORNIA
CARTO TECH. _____
CHECKED BY _____
SUBMITTED BY _____
STEVE J. CAREY
LEAD, CADASTRAL TEAM
RECOMMENDED BY _____
JAMES M. OLIVER
CHIEF, GEOMATICS SECTION

ENGINEERING GEOMATICS SECTION - CADASTRAL TEAM
YUBA RIVER ECOSYSTEM RESTORATION FEASIBILITY STUDY HABITAT INCREMENTS 2, 3A, 5A & 5B

APPROVED BY _____ DATE _____
DIANE M. SIMPSON
CHIEF, REAL ESTATE DIVISION

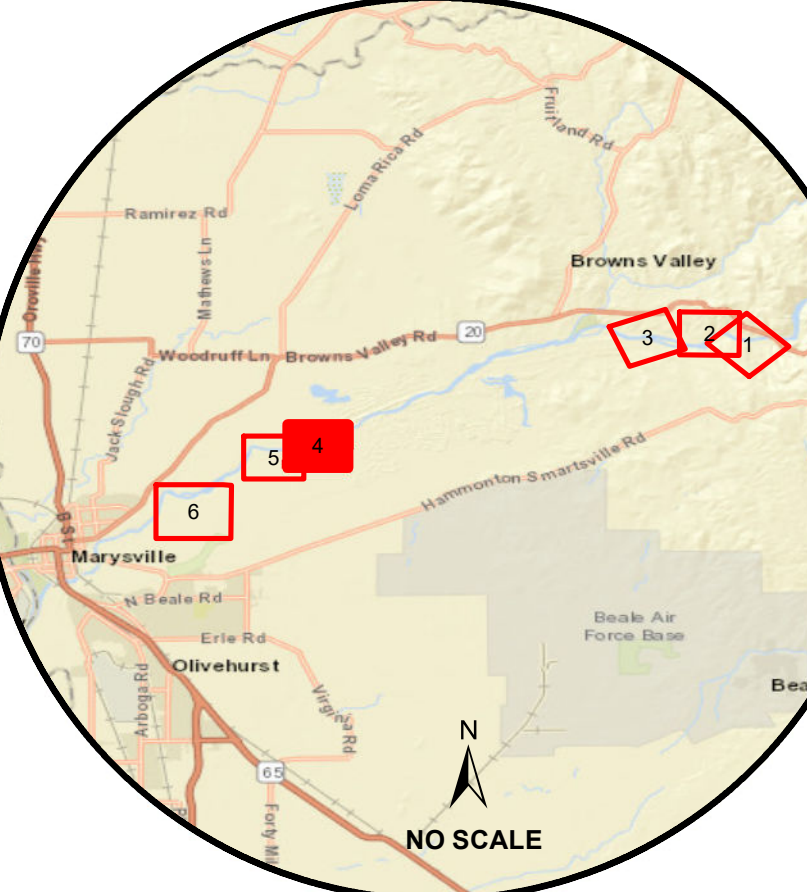
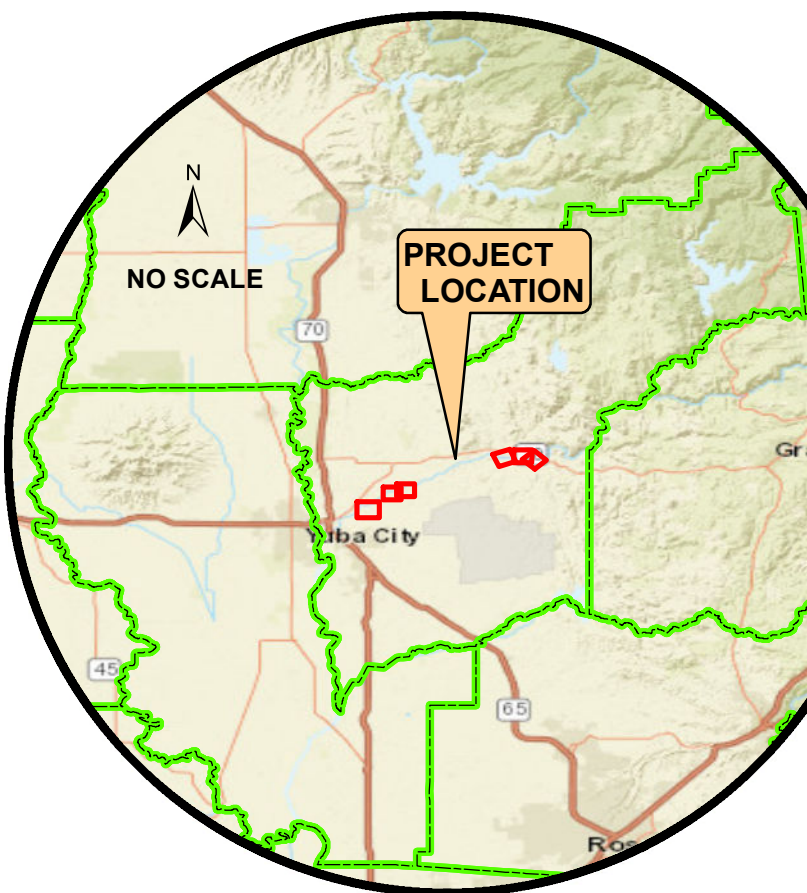
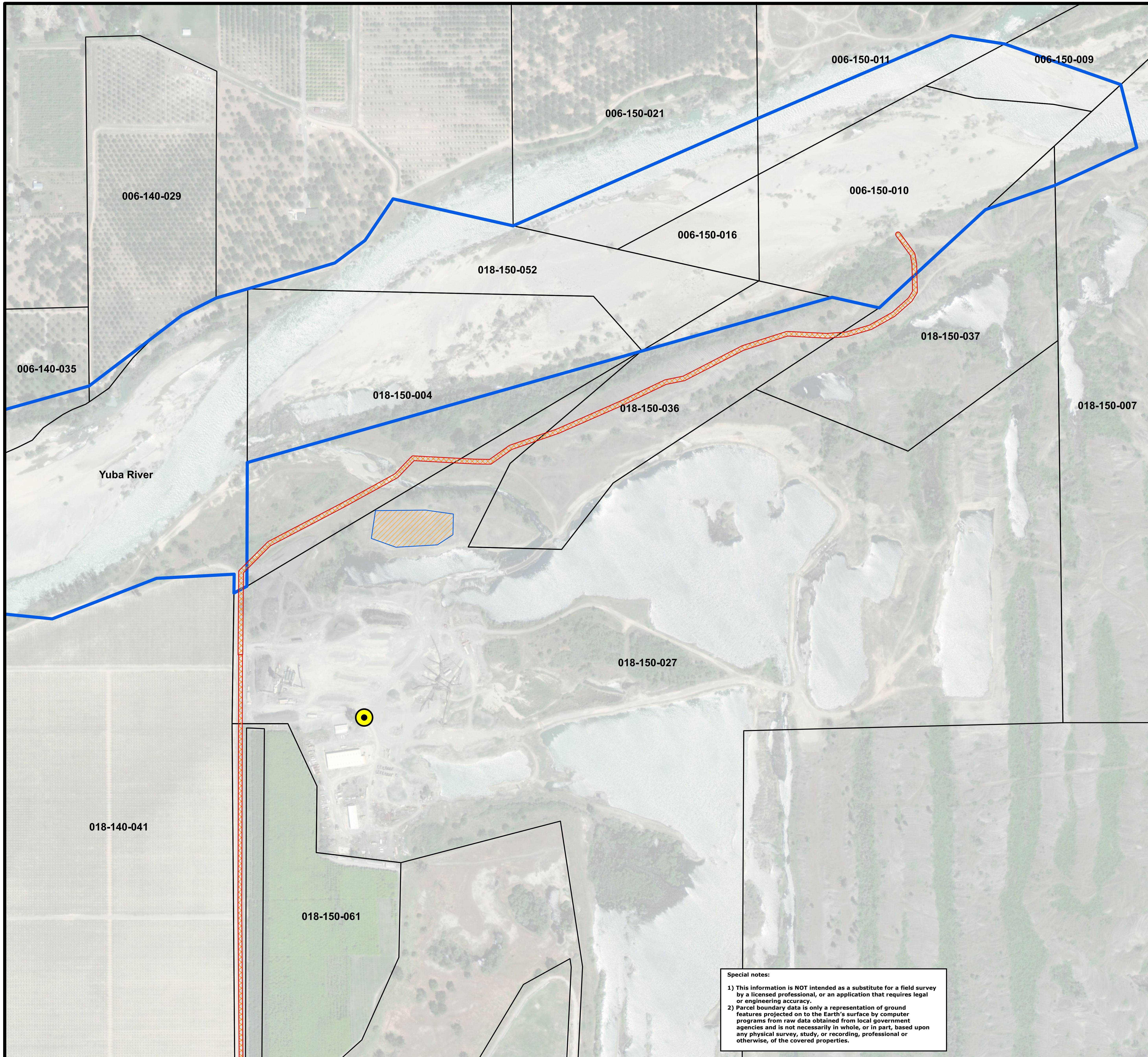
OFFICE, CHIEF OF ENGINEERS, WASHINGTON 25, D.C.
REMISS CODE: _____
REMISS UNIQUE ID: _____
INSTALLATION OR PROJECT NO. _____

Date Saved: 8/23/2018 4:08:36 PM
This sheet originally formatted to ARCH_E1_30"x42".
SHEET 03 OF 07 DRAWING NO. _____

Special notes:

- 1) This information is NOT intended as a substitute for a field survey by a licensed professional, or an application that requires legal or engineering accuracy.
- 2) Parcel boundary data is only a representation of ground features projected on to the Earth's surface by computer programs from raw data obtained from local government agencies and is not necessarily in whole, or in part, based upon any physical survey, study, or recording, professional or otherwise, of the covered properties.

Path: S:\3_SPK\Yuba_Goldfields\Projects\Eco_Restorations_2017\00180816_VPR\FRS.mxd



METADATA
Townships/Ranges:
005,0011E
of the Mount Diablo Baseline & Meridian.

N
0 200 400 600 800
1:2,400
1 inch = 200 feet
Feet

Coordinate System:
NAD 1983 2011 StatePlane California II FIPS 0402 Ft US
Projection: Lambert Conformal Conic
Datum: NAD 1983 2011
Units: Foot US

ACQUISITION AUTHORIZATION

FINAL
As Applicable
PROJECT MAP

DEPARTMENT OF THE ARMY
USING SERVICE U.S. ARMY

LOCATION OF PROJECT

STATE CALIFORNIA
COUNTY YUBA COUNTY
DIVISION SOUTH PACIFIC DIVISION (SPD)
DISTRICT SACRAMENTO (SPK)
ARMY AREA 6TH ARMY
13 Miles N.E. OF YUBA CITY
43 Miles N. OF SACRAMENTO

TRANSPORTATION FACILITIES

FEDERAL ROADS US HWY 5
STATE ROADS STATE HWY 70/99
AIRPORTS SACRAMENTO INT. AIRPORT

ACQUISITION

TOTAL ACRES ACQUIRED See T.A.R.
FEE See T.A.R.
PUBLIC DOMAIN (WITHDRAWN) See T.A.R.
USE PERMIT (Other than P.D.)
TRANSFER (WITHDRAWN) USE PERMIT

LEASE NONE
EASEMENT RESERVED IN FEE DISPOSAL
LESSER INTERESTS (EASEMENT) PERMIT LICENSE

DISPOSAL

TOTAL ACRES DISPOSED NO AREA
SOLD
PUBLIC DOMAIN (WITHDRAWN) USE PERMIT
USE PERMIT (Other than P.D.)
TRANSFERRED (FEE)
LEASES TERMINATED
LESSER INTERESTS TERM
REASSIGNED
ACRES TO

LEGEND

EXCEPT FOR SPECIAL SYMBOLS SHOWN BELOW, MAP SYMBOLS ARE STANDARD IN U.S. ARMY FIELD MANUAL, FM 21-31, TOPOGRAPHIC SYMBOLS, DATED DECEMBER 1968.

- STAGING
- TWAE
- HAUL ROUTE
- FOOTPRINT
- DISPOSAL SITE

REAL ESTATE OWNERSHIP MAPS 2017

DEPARTMENT OF THE ARMY
OFFICE OF THE SACRAMENTO DISTRICT ENGINEER
SOUTH PACIFIC DIVISION

CARTOGRAPHER J. HENRIKSEN YUBA COUNTY CALIFORNIA
CARTO TECH. _____
CHECKED BY _____

SUBMITTED BY
STEVE J. CAREY
LEAD, CADASTRAL TEAM

RECOMMENDED BY
JAMES M. OLIVER
CHIEF, GEOMATICS SECTION

APPROVED BY _____ DATE _____
DIANE M. SIMPSON
CHIEF, REAL ESTATE DIVISION

OFFICE, CHIEF OF ENGINEERS, WASHINGTON 25, D.C.
REMISS CODE: _____
REMISS UNIQUE ID: _____
INSTALLATION OR PROJECT NO. _____

ENGINEERING GEOMATICS SECTION - CADASTRAL TEAM
YUBA RIVER ECOSYSTEM RESTORATION FEASIBILITY STUDY HABITAT INCREMENTS 2, 3A, 5A & 5B

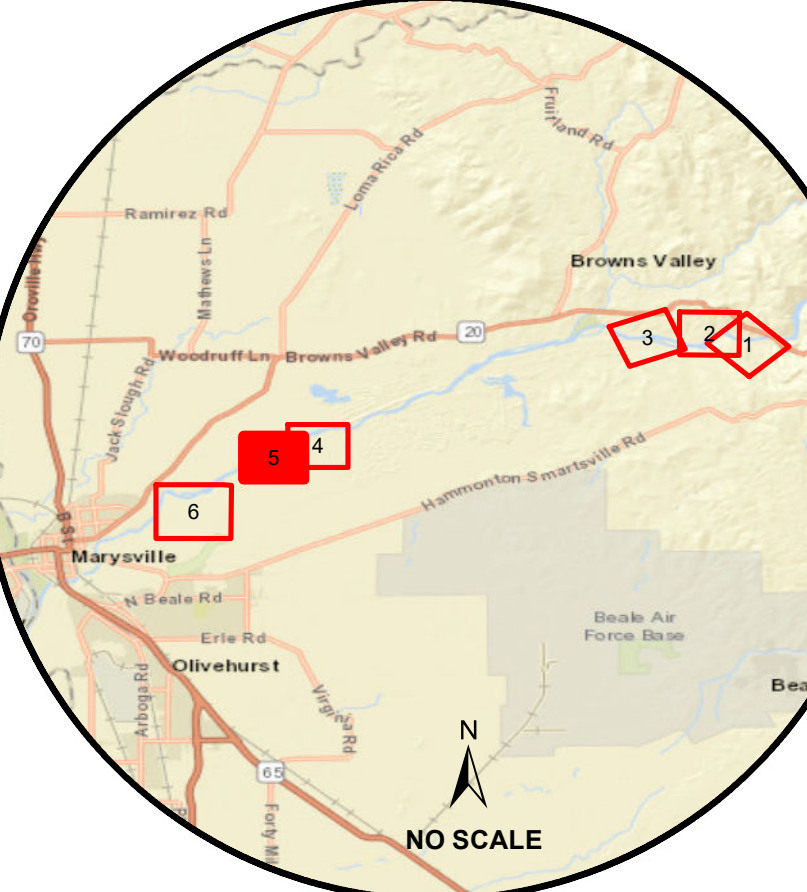
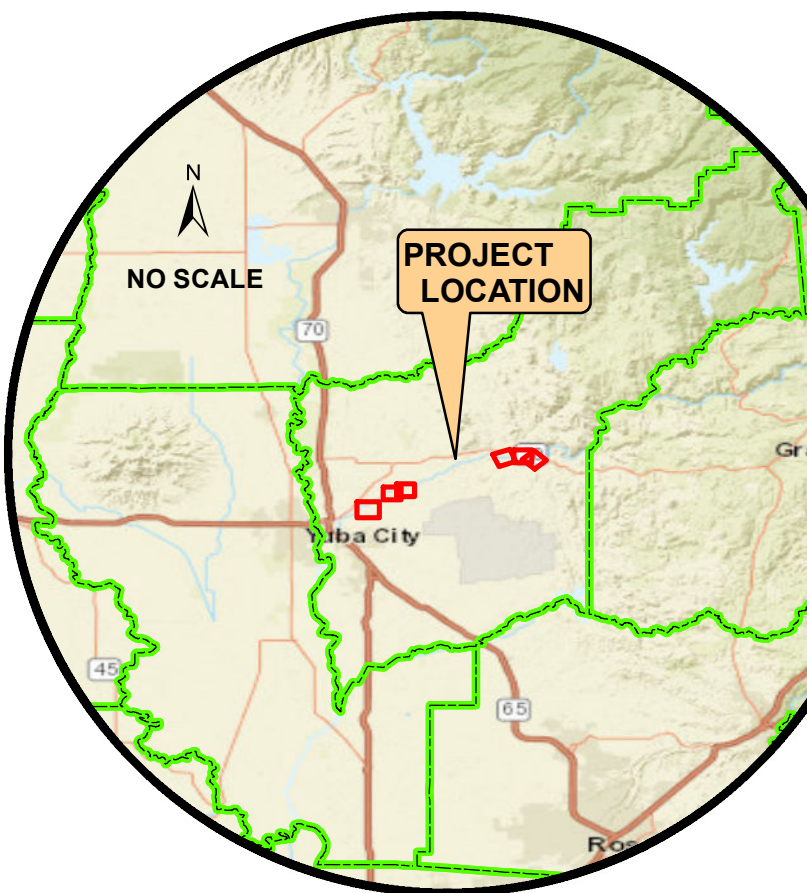
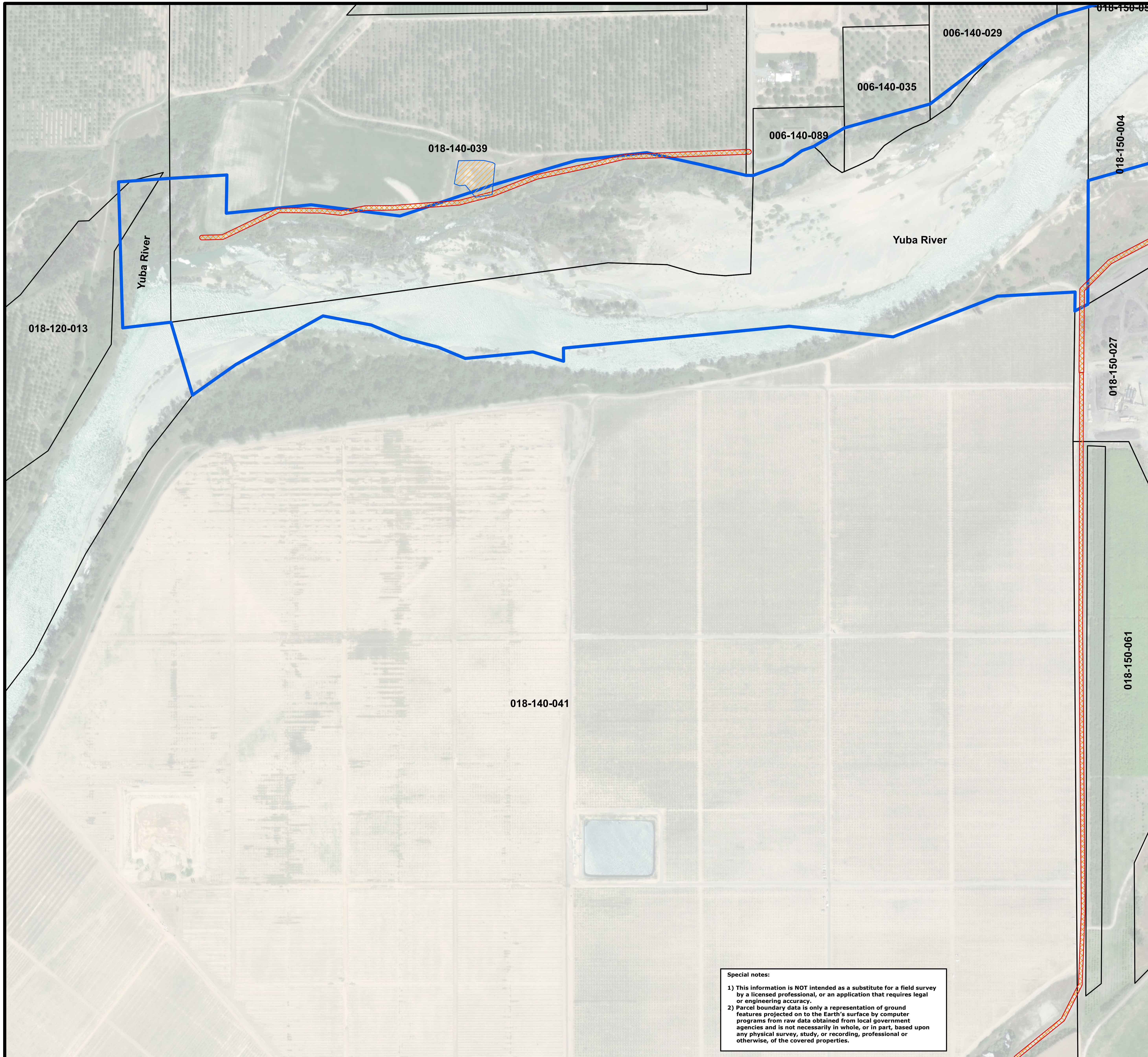
Date Saved: 8/23/2018 4:08:36 PM
This sheet originally formatted to ARCH_E1_30"x42".

SHEET 04 OF 07 DRAWING NO. _____

Special notes:

- 1) This information is NOT intended as a substitute for a field survey by a licensed professional, or an application that requires legal or engineering accuracy.
- 2) Parcel boundary data is only a representation of ground features projected on to the Earth's surface by computer programs from raw data obtained from local government agencies and is not necessarily in whole, or in part, based upon any physical survey, study, or recording, professional or otherwise, of the covered properties.

Path: S:\3_SPK\Yuba_Goldfields\Projects\Eco_Restorations_2017\00180816_VREFRS.mxd



FINAL
As Applicable
PROJECT MAP

DEPARTMENT OF THE ARMY
USING SERVICE U.S. ARMY

LOCATION OF PROJECT

STATE CALIFORNIA
COUNTY YUBA COUNTY
DIVISION SOUTH PACIFIC DIVISION (SPD)
DISTRICT SACRAMENTO (SPK)
ARMY AREA 6TH ARMY
13 Miles N.E. OF YUBA CITY
43 Miles N. OF SACRAMENTO

TRANSPORTATION FACILITIES

FEDERAL ROADS US HWY 5
STATE ROADS STATE HWY 70/99
AIRPORTS SACRAMENTO INT. AIRPORT

ACQUISITION

TOTAL ACRES ACQUIRED See T.A.R.
FEE See T.A.R.
PUBLIC DOMAIN (WITHDRAWN) USE PERMIT See T.A.R.
USE PERMIT (Other than P.D.)
TRANSFER (WITHDRAWN) USE PERMIT

LEASE NONE
EASEMENT RESERVED IN FEE DISPOSAL
LESSER INTERESTS (EASEMENT) PERMIT (LICENSE)

DISPOSAL

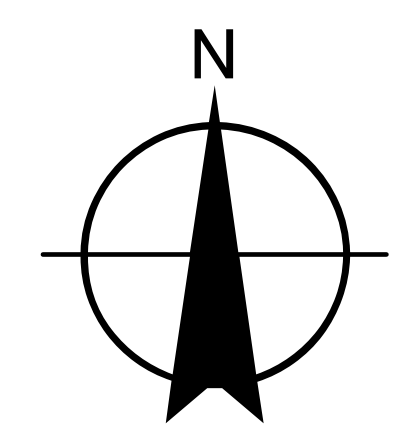
TOTAL ACRES DISPOSED NO AREA
SOLD
PUBLIC DOMAIN (WITHDRAWN) USE PERMIT
USE PERMIT (Other than P.D.)
TRANSFERRED (FEE)
LEASES TERMINATED
LESSER INTERESTS TERM REASSIGNED
ACRES TO

LEGEND

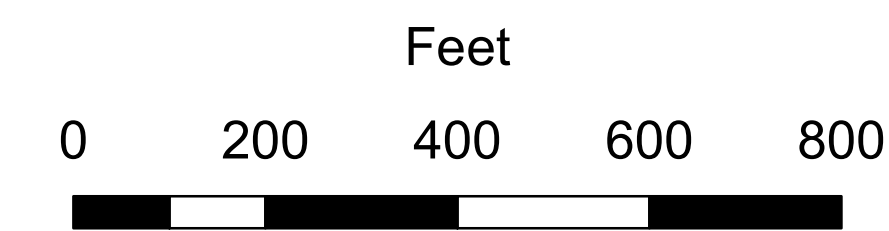
EXCEPT FOR SPECIAL SYMBOLS SHOWN BELOW, MAP SYMBOLS ARE STANDARD IN U.S. ARMY FIELD MANUAL, FM 21-31, TOPOGRAPHIC SYMBOLS, DATED DECEMBER 1968.

- STAGING
- TWAE
- HAUL ROUTE
- FOOTPRINT
- DISPOSAL SITE

METADATA
Townships/Ranges:
005,0011E
of the Mount Diablo Baseline & Meridian.



1:2,400
1 inch = 200 feet



Coordinate System:
NAD 1983 2011 StatePlane California II FIPS 0402 Ft US
Projection: Lambert Conformal Conic
Datum: NAD 1983 2011
Units: Foot US

ACQUISITION AUTHORIZATION

REAL ESTATE OWNERSHIP MAPS 2017

DEPARTMENT OF THE ARMY
OFFICE OF THE SACRAMENTO DISTRICT ENGINEER
SOUTH PACIFIC DIVISION

CARTOGRAPHER J. HENRIKSEN
CARTO TECH.
CHECKED BY

YUBA COUNTY
ENGINEERING GEOMATICS SECTION -
CADASTRAL TEAM
CALIFORNIA

SUBMITTED BY
STEVE J. CAREY
LEAD, CADASTRAL TEAM

**YUBA RIVER ECOSYSTEM RESTORATION
FEASIBILITY STUDY
HABITAT INCREMENTS 2, 3A, 5A & 5B**

RECOMMENDED BY
JAMES M. OLIVER
CHIEF, GEOMATICS SECTION

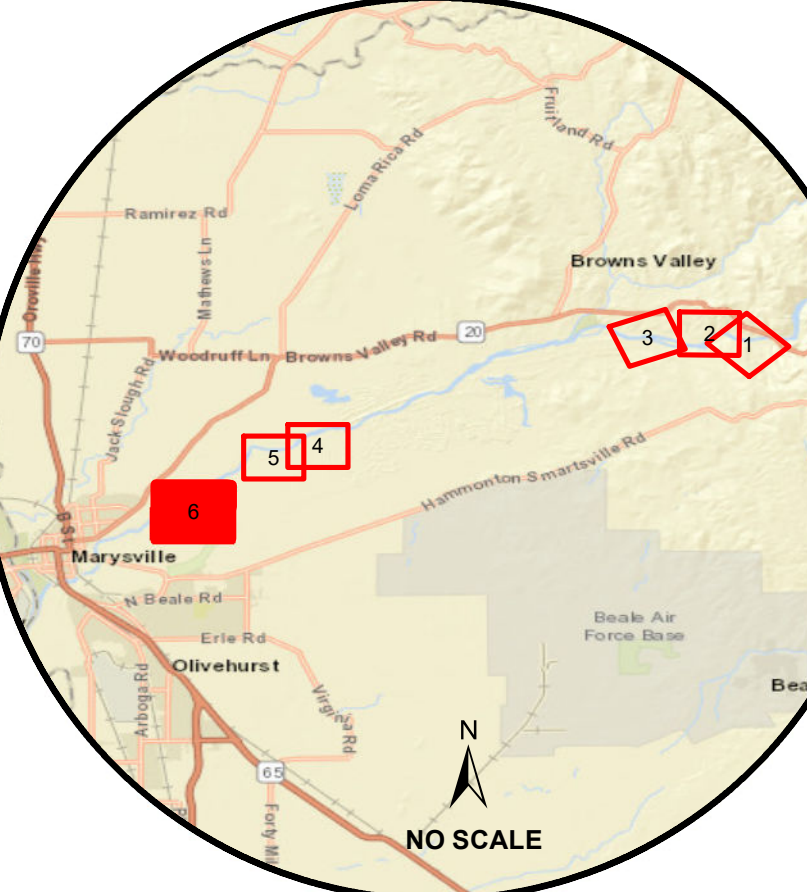
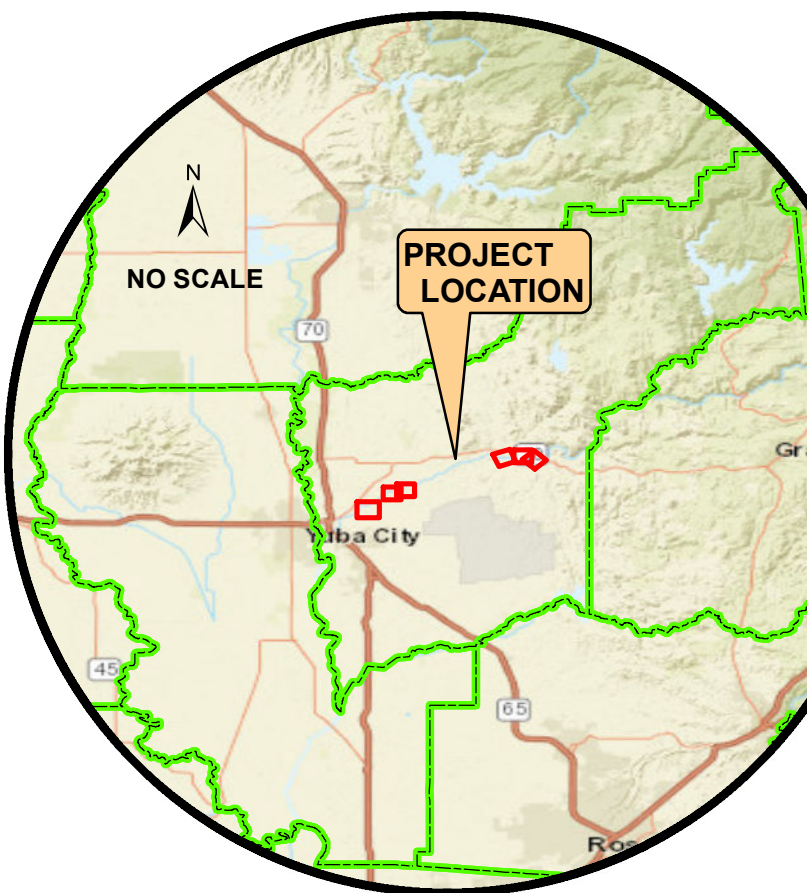
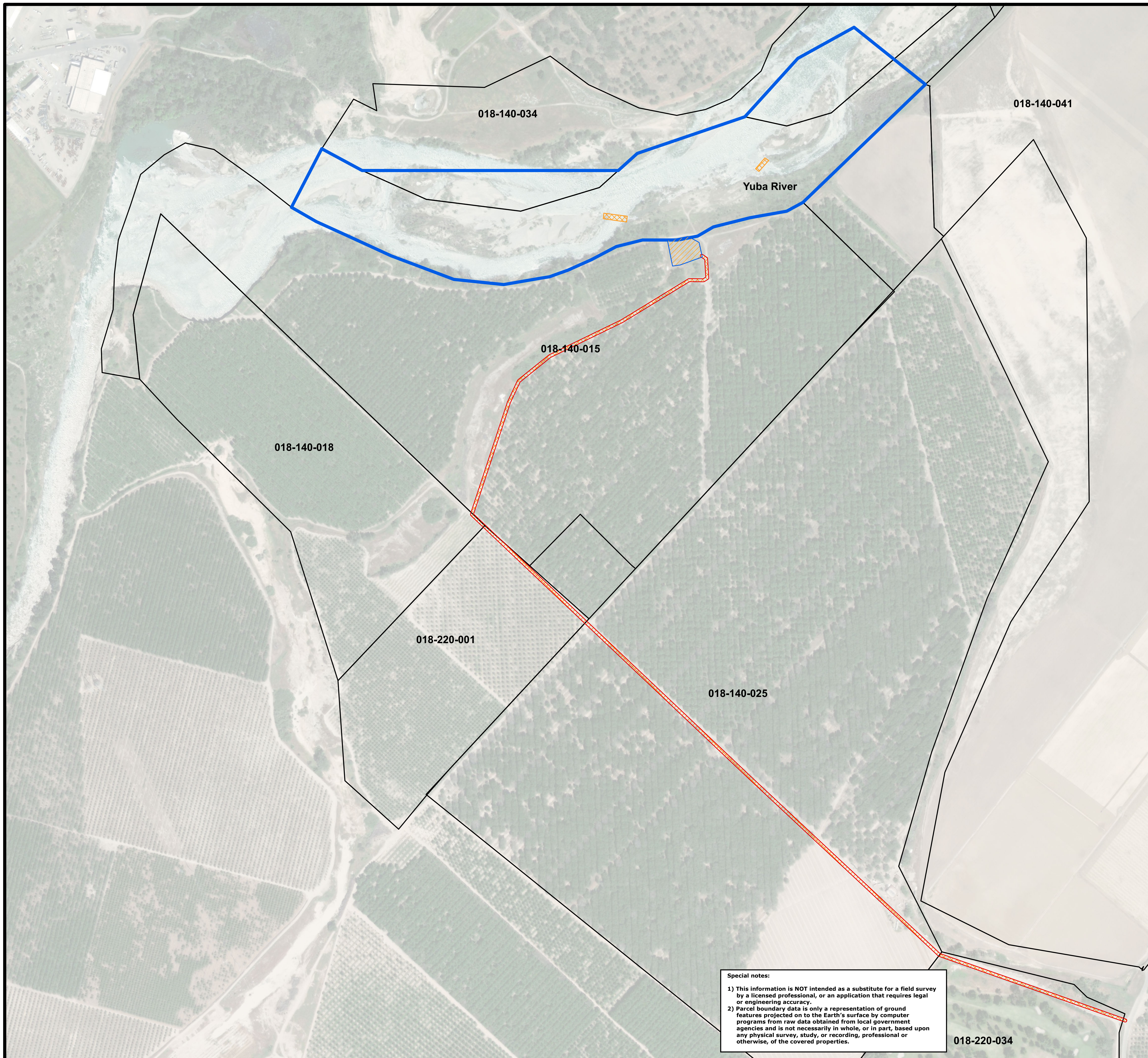
APPROVED BY DIANE M. SIMPSON DATE _____
CHIEF, REAL ESTATE DIVISION

OFFICE, CHIEF OF ENGINEERS, WASHINGTON 25, D.C.
REMIS CODE:
REMIS UNIQUE ID:
INSTALLATION OR PROJECT NO. _____

Date Saved: 8/23/2018 4:08:36 PM
This sheet originally formatted to ARCH_E1_30"x42".
SHEET 05 OF 07 DRAWING NO. _____

Special notes:

- 1) This information is NOT intended as a substitute for a field survey by a licensed professional, or an application that requires legal or engineering accuracy.
- 2) Parcel boundary data is only a representation of ground features projected on to the Earth's surface by computer programs from raw data obtained from local government agencies and is not necessarily in whole, or in part, based upon any physical survey, study, or recording, professional or otherwise, of the covered properties.



FINAL
As Applicable

PROJECT MAP

DEPARTMENT OF THE ARMY
USING SERVICE U.S. ARMY

LOCATION OF PROJECT

STATE CALIFORNIA
COUNTY YUBA COUNTY
DIVISION SOUTH PACIFIC DIVISION (SPD)
DISTRICT SACRAMENTO (SPK)
ARMY AREA 6TH ARMY
13 Miles N.E. OF YUBA CITY
43 Miles N. OF SACRAMENTO

TRANSPORTATION FACILITIES

FEDERAL ROADS US HWY 5
STATE ROADS STATE HWY 70/99
AIRPORTS SACRAMENTO INT. AIRPORT

ACQUISITION

TOTAL ACRES ACQUIRED See T.A.R.
FEE See T.A.R.
PUBLIC DOMAIN (WITHDRAWN) USE PERMIT
USE PERMIT (Other than P.D.)
TRANSFER (WITHDRAWN) USE PERMIT

LEASE NONE
EASEMENT RESERVED IN FEE DISPOSAL
LESSER INTERESTS (EASEMENT) PERMIT (LICENSE)

DISPOSAL

TOTAL ACRES DISPOSED NO AREA
SOLD
PUBLIC DOMAIN (WITHDRAWN) USE PERMIT
USE PERMIT (Other than P.D.)
TRANSFERRED (FEE)
LEASES TERMINATED
LESSER INTERESTS TERM
REASSIGNED
ACRES TO

METADATA
Townships/Ranges:
005,0011E
of the Mount Diablo Baseline & Meridian.

N
1:3,000
1 inch = 250 feet

Feet
0 200 400 600 800

Coordinate System:
NAD 1983 2011 StatePlane California II FIPS 0402 Ft US
Projection: Lambert Conformal Conic
Datum: NAD 1983 2011
Units: Foot US

ACQUISITION AUTHORIZATION

- STAGING
- TWAE
- HAUL ROUTE
- FOOTPRINT
- DISPOSAL SITE

REAL ESTATE OWNERSHIP MAPS 2017

DEPARTMENT OF THE ARMY
OFFICE OF THE SACRAMENTO DISTRICT ENGINEER
SOUTH PACIFIC DIVISION

CARTOGRAPHER J. HENRIKSEN YUBA COUNTY CALIFORNIA
CARTO TECH. _____
CHECKED BY _____

SUBMITTED BY
STEVE J. CAREY
LEAD, CADASTRAL TEAM

RECOMMENDED BY
JAMES M. OLIVER
CHIEF, GEOMATICS SECTION

APPROVED BY _____ DATE _____
DIANE M. SIMPSON
CHIEF, REAL ESTATE DIVISION

OFFICE, CHIEF OF ENGINEERS, WASHINGTON 25, D.C.
REMISS CODE: _____
REMISS UNIQUE ID: _____
INSTALLATION OR PROJECT NO. _____

ENGINEERING GEOMATICS SECTION - CADASTRAL TEAM
YUBA RIVER ECOSYSTEM RESTORATION FEASIBILITY STUDY HABITAT INCREMENTS 2, 3A, 5A & 5B

Date Saved: 8/23/2018 4:08:36 PM
This sheet originally formatted to ARCH_E1_30"x42".

SHEET 06 OF 07 DRAWING NO. _____

Special notes:

- 1) This information is NOT intended as a substitute for a field survey by a licensed professional, or an application that requires legal or engineering accuracy.
- 2) Parcel boundary data is only a representation of ground features projected on to the Earth's surface by computer programs from raw data obtained from local government agencies and is not necessarily in whole, or in part, based upon any physical survey, study, or recording, professional or otherwise, of the covered properties.

Path: S:\3_SPK\Yuba_Goldfields\Projects\Eco_Restorations_2017\00180816_VPR\FMS.mxd

YUBA RIVER ECOSYSTEMS RESTORATION, FEASIBILITY STUDY, TRACT ACQUISITION REGISTER, NOVEMBER 28, 2017

APN	OWNER	ADDRESS (Mail)	SITE ADDRESS (Physical)	PARCEL AREA ACRES	Natural Resource Rights	Haul Route (Perm) ACRES	Fee Take Area ACRES	T.W.A.E		APN Sub Totals ACRES
								Staging ACRES	Bridge ACRES	
005-270-018	LOFTIS, DOUGLAS J	6078 SANDSTONE LN, BROWNS VALLEY, CA, 95918	6132 STATE HIGHWAY 20, BROWNS VALLEY, CA, 95918	31.00	Yes	1.269				1.269
005-270-176	WESTERN AGGREGATES INC	PO BOX 829, MARYSVILLE, CA, 95901	, BROWNS VALLEY, CA, 95918	117.50	Yes		15.582			15.582
005-270-197	RAVENSCROFT, ANITA L	2139 MAGNUM CT, ELVERTA, CA, 95626	, BROWNS VALLEY, CA, 95918	65.33	Yes	0.140				0.140
005-270-200	YUBA RIVER PROPERTIES	PO BOX 534, PLACERVILLE, CA, 95667	, BROWNS VALLEY, CA, 95918	8.47			2.442			2.442
005-280-046	POWELL, THOMAS D	5333 MOODY LN, CARMICHAEL, CA, 95608	, BROWNS VALLEY, CA, 95918	4.75	Yes	0.074				0.074
005-280-064	CRAIN, L WAYNE	8978 ROUND TOP RD, MANASSAS, VA, 20112	6988 STATE HIGHWAY 20, SMARTSVILLE, CA, 95977	4.70		0.236				0.236
005-280-065	SELLERS, ALVIN MARTIN	2323 KIPLAND DR, SANTA ROSA, CA, 95401	7038 STATE HIGHWAY 20, SMARTSVILLE, CA, 95977	4.71		0.122				0.122
005-570-013	BOCK, GREGORY	8089 QUARTZ LN, SMARTSVILLE, CA, 95977	6274 SANDSTONE LN, BROWNS VALLEY, CA, 95918	23.86	Yes	0.653				0.653
005-570-015	BELZA, JOHN JOSEPH	6265 SANDSTONE LN, BROWNS VALLEY, CA, 95918	6265 SANDSTONE LN, BROWNS VALLEY, CA, 95918	5.00		0.273				0.273
005-570-017	HARRINGTON, MICHAEL SEAN	6275 SANDSTONE LN, BROWNS VALLEY, CA, 95918	6275 SANDSTONE LN, BROWNS VALLEY, CA, 95918	5.03		0.229				0.229
006-140-029	CHANDLESS, MARK S	7835 HALLWOOD BLVD, MARYSVILLE, CA, 95901	, MARYSVILLE, CA, 95901	28.00			0.426			0.426
006-140-035	CHANDLESS, MARK S	7835 HALLWOOD BLVD, MARYSVILLE, CA, 95901	7835 HALLWOOD BLVD, MARYSVILLE, CA, 95901	10.48			1.636			1.636
006-140-089	POWELL, EDWARD H	7811 HALLWOOD BLVD, MARYSVILLE, CA, 95901	7811 HALLWOOD BLVD, MARYSVILLE, CA, 95901	6.44			0.478			0.478
006-150-009	WESTERN AGGREGATES INC	PO BOX 829, MARYSVILLE, CA, 95901	, MARYSVILLE, CA, 95901	17.00	Yes		4.419			4.419
006-150-010	WESTERN AGGREGATES INC	PO BOX 829, MARYSVILLE, CA, 95901	, MARYSVILLE, CA, 95901	24.00	Yes		24.000			24.000
006-150-011	WURM, SAMUEL J	PO BOX 1066, DURHAM, CA, 95938	, MARYSVILLE, CA, 95901	30.16	Yes		6.439			6.439
006-150-016	WURM, JOHNNIE A	PO BOX 1066, DURHAM, CA, 95938	, MARYSVILLE, CA, 95901	7.00	Yes		7.000			7.000
006-150-021	WURM, SAMUEL J	PO BOX 1066, DURHAM, CA, 95938	, MARYSVILLE, CA, 95901	53.00			8.024			8.024
006-170-065	WESTERN AGGREGATES INC	PO BOX 829, MARYSVILLE, CA, 95901	, MARYSVILLE, CA, 95901	56.19	Yes		25.338			25.338
006-170-070	U S A	63 NATOMA ST, FOLSOM, CA 95630	, BROWNS VALLEY, CA, 95918	0.60		0.038				0.038
006-170-118	WESTERN AGGREGATES INC	PO BOX 829, MARYSVILLE, CA, 95901	6452 HAMMONTON RD, MARYSVILLE, CA, 95901	124.30	Yes	1.110	26.986			28.096
006-170-119	WESTERN AGGREGATES INC	PO BOX 829, MARYSVILLE, CA, 95901	, MARYSVILLE, CA, 95901	101.85	Yes		46.345		0.446	46.791
006-170-122	WESTERN AGGREGATES INC	PO BOX 829, MARYSVILLE, CA, 95901	, MARYSVILLE, CA, 95901	116.00	Yes		116.000			116.000
006-170-123	WILDTOO LLC	7745 GREENBACK LN STE 300, CITRUS HEIGHTS, CA, 95610	, MARYSVILLE, CA, 95901	38.00	Yes	1.476		0.817		2.293
006-170-124	WILDTOO LLC	7745 GREENBACK LN STE 300, CITRUS HEIGHTS, CA, 95610	, MARYSVILLE, CA, 95901	21.00	Yes	0.303				0.303
006-170-126	WESTERN AGGREGATES INC	PO BOX 829, MARYSVILLE, CA, 95901	, MARYSVILLE, CA, 95901	124.35	Yes		0.685			0.685
006-170-139	NOT AVAILABLE FROM THE COUNTY	NOT AVAILABLE FROM THE COUNTY	, , CA, 95977	33.92		0.752				0.752
006-170-140	LONG BAR MINE LLC	PO BOX 534, PLACERVILLE, CA, 95667	, , CA, 95977	16.90	Yes		16.900			16.900
006-170-141	LONG BAR MINE LLC	PO BOX 534, PLACERVILLE, CA, 95667	, , CA, 95977	79.30	Yes		79.300			79.300
006-170-143	YUBA RIVER PROPERTIES	PO BOX 534, PLACERVILLE, CA, 95667	, , CA, 95977	79.92	Yes	0.097	22.491	0.534		23.122
006-170-144	NOT AVAILABLE FROM THE COUNTY	NOT AVAILABLE FROM THE COUNTY	, , CA, 95977	41.57		1.387				1.387
006-180-002	YUBA RIVER PROPERTIES	PO BOX 534, PLACERVILLE, CA, 95667	, , CA, 95977	0.93	Yes		0.933			0.933
006-180-027	WESTERN AGGREGATES INC	PO BOX 829, MARYSVILLE, CA, 95901	, , CA, 95977	17.26	Yes		17.260			17.260
006-180-045	WILDTOO LLC	7745 GREENBACK LN STE 300, CITRUS HEIGHTS, CA, 95610	, , CA, 95977	18.80	Yes	0.581				0.581
006-180-046	WILDTOO LLC	7745 GREENBACK LN STE 300, CITRUS HEIGHTS, CA, 95610	, , CA, 95977	41.50	Yes	0.895				0.895
006-180-047	WILDTOO LLC	7745 GREENBACK LN STE 300, CITRUS HEIGHTS, CA, 95610	, , CA, 95977	11.00	Yes	0.101				0.101
006-180-054	O L D LLC	5805 FLEET CT, ROCKLIN, CA, 95765	, , CA, 95977	3.70	Yes	0.133		0.046		0.179
006-180-055	SCHARDT, FREDERICK L	4381 ALAZAN RD, PLACERVILLE, CA, 95667	, , CA, 95977	3.22		0.295		0.066		0.361
006-180-062	HARRIS, BOB III	7190 HWY 20, SMARTVILLE, CA, 95977	, , CA, 95977	26.58	Yes		25.328	0.396		25.724
006-180-066	HARRIS, BOB III	7190 HWY 20, SMARTVILLE, CA, 95977	, , CA, 95977	18.73	Yes		18.730			18.730
018-120-013	BOOM, JEFFREY D	2310 POWELL RD, MARYSVILLE, CA 95901	, MARYSVILLE, CA, 95901	46.58			0.749			0.749
018-140-015	R B SATORI LP	PO BOX 3730, YUBA CITY, CA, 95992	6714 DANTONI RD, LINDA, CA, 95901	151.80		1.186		0.714		1.900
018-140-018	R B SATORI LP	PO BOX 3730, YUBA CITY, CA, 95992	, LINDA, CA, 95901	66.63		0.044				0.044
018-140-025	R B SATORI LP	PO BOX 3730, YUBA CITY, CA, 95992	, LINDA, CA, 95901	255.42		1.477				1.477
018-140-034	BALDWIN CONTRACTING COMPANY	1764 SKYWAY, CHICO, CA, 95928	, MARYSVILLE, CA, 95901	47.65	Yes		13.752			13.752
018-140-039	WURM, JOHNNIE A	3105 WALNUT AVE, MARYSVILLE, CA, 95901	, LINDA, CA, 95901	115.00		1.702	38.069	0.748		40.519
018-140-041	AIRPORT RANCH CO	1095 E GREEN ST, PASADENA, CA, 91106	7222 DANTONI RD, LINDA, CA, 95901	1157.17		1.260				1.260
018-150-004	REAM, STEPHANIE SERPA	951 JACKS VALLEY RD STE E, CARSON CITY, NV, 89705	, MARYSVILLE, CA, 95901	30.68	Yes	0.743	28.075			28.818
018-150-007	WESTERN AGGREGATES INC	PO BOX 829, MARYSVILLE, CA, 95901	, MARYSVILLE, CA, 95901	495.00	Yes		2.704			2.704
018-150-027	PLANT, NOBLE D	PO BOX 1067, MARYSVILLE, CA, 95901	7229 DANTONI RD STE A, LINDA, CA, 95901	199.08		0.639		1.701		2.340
018-150-036	REAM, STEPHANIE SERPA	951 JACKS VALLEY RD STE E, CARSON CITY, NV, 89705	, MARYSVILLE, CA, 95901	12.80	Yes	0.970	2.288			3.258
018-150-037	REAM, STEPHANIE SERPA	951 JACKS VALLEY RD STE E, CARSON CITY, NV, 89705	, MARYSVILLE, CA, 95901	16.20	Yes	0.327	0.884			1.211
018-150-052	NOT AVAILABLE FROM THE COUNTY	4711 HAMMONTON RD, MARYSVILLE, CA, 95901	, MARYSVILLE, CA, 95901	20.60	Yes		20.600			20.600
018-150-061	SHINTAFFER FARMS INC	PO BOX 389, MARYSVILLE, CA, 95901	7231 DANTONI RD, LINDA, CA, 95901	202.27		1.337				1.337
018-220-001	RB SATORI LP	NOT AVAILABLE FROM THE COUNTY	, LINDA, CA, 95901	35.44		0.416				0.416
018-220-034	PEACH TREE GOLF & COUNTRY CLUB	NOT AVAILABLE FROM THE COUNTY	6454 SPECKERT RD, LINDA, CA, 95901	190.12		0.603				0.603
Yuba River	State Board of Equalization	P.O. Box 942879 Sacramento, CA 94279	Yuba River	N/A		0.079	118.396	0.024	0.200	118.699

Special notes:
 1) This information is NOT intended as a substitute for a field survey by a licensed professional, or an application that requires legal or engineering accuracy.
 2) Parcel boundary data is only a representation of ground features projected on to the Earth's surface by computer programs from raw data obtained from local government agencies and is not necessarily in whole, or in part, based upon any physical survey, study, or recording, professional or otherwise, of the covered properties.

TOTAL PARCEL ACRES = 4464.50

TOTAL TWAE ACRES = 5.692
TOTAL Owners w/rights = 39

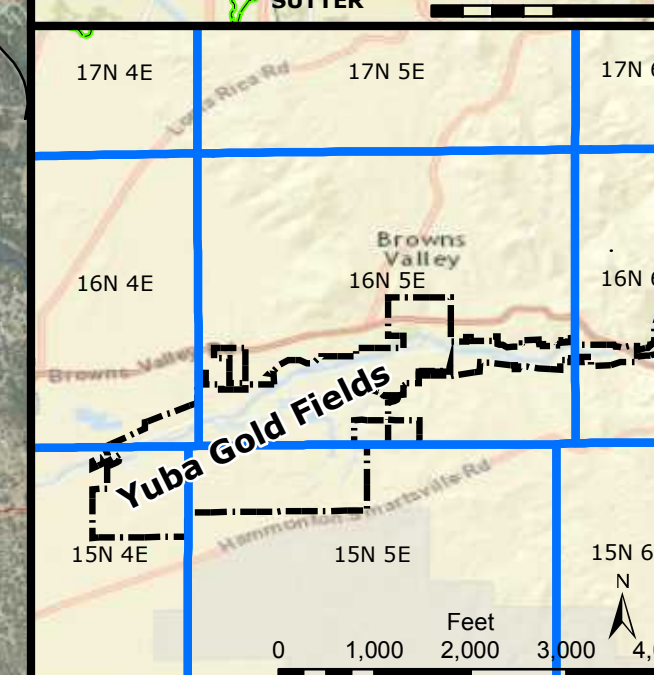
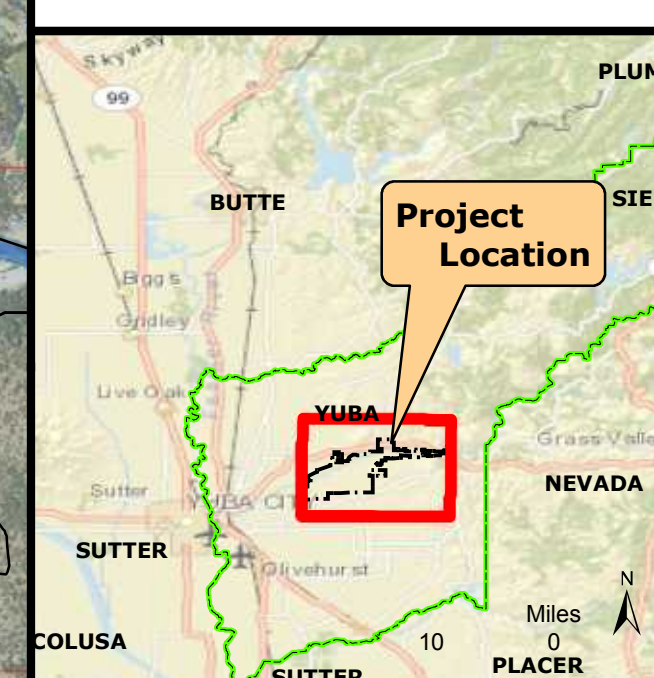
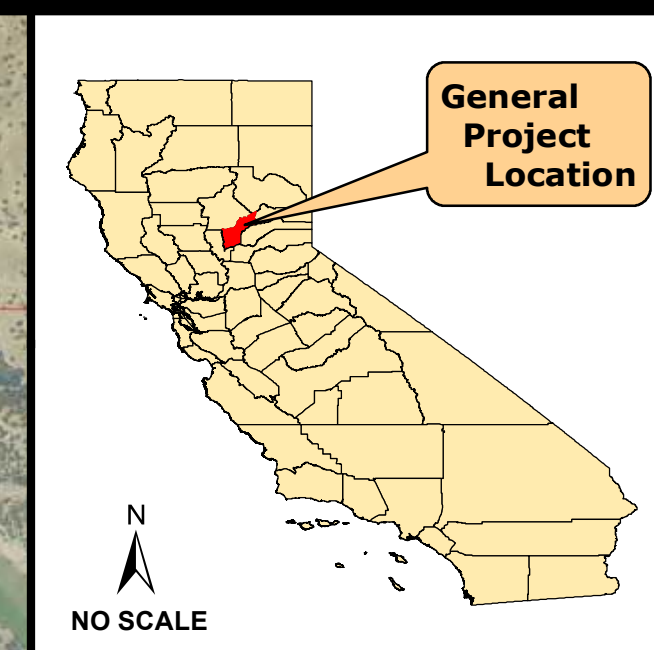
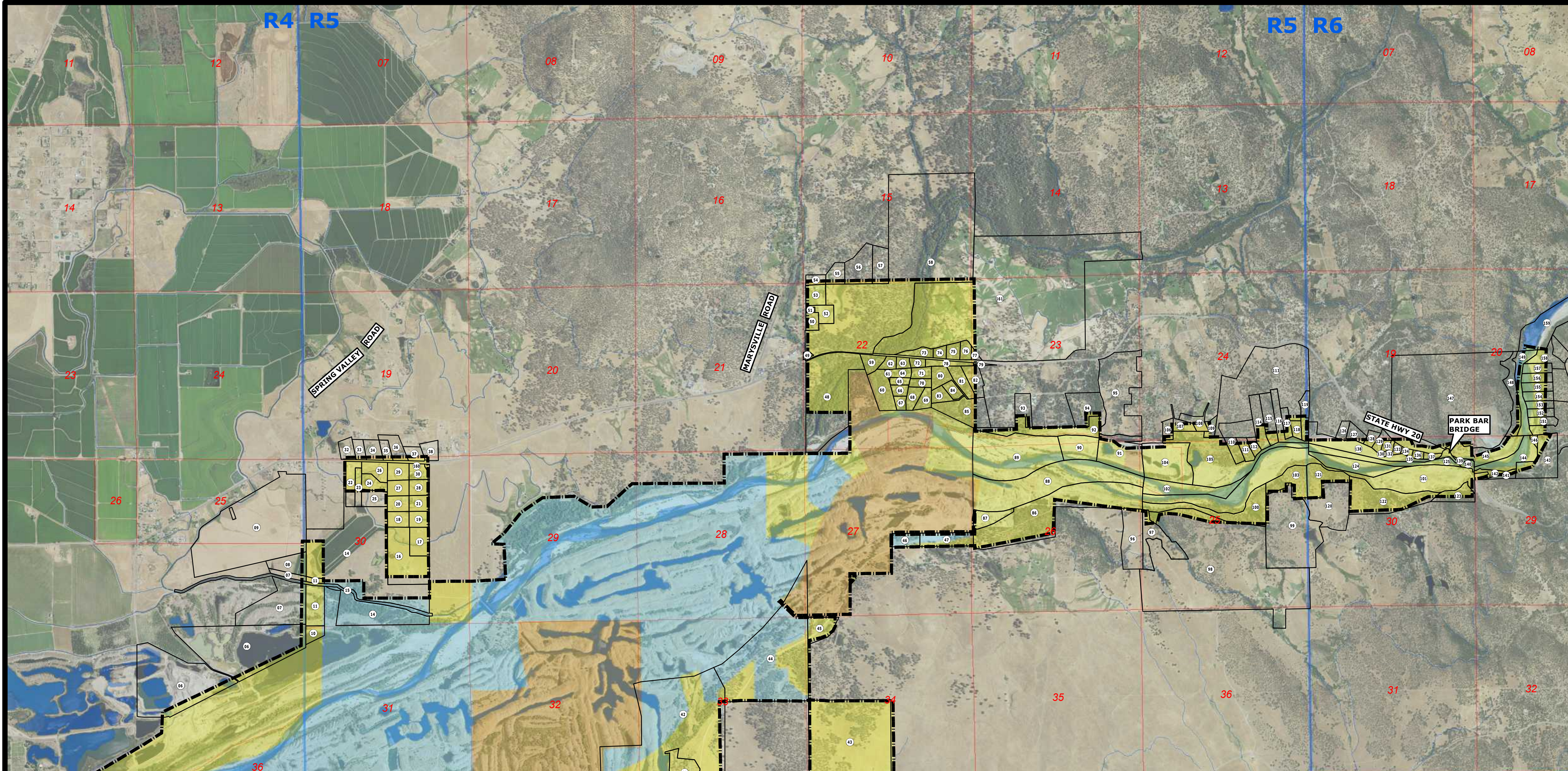
LEGEND

T.W.A.E. = TEMPORARY WORK AREA EASEMENT (includes Staging, Site Access, Temp Bridge Access, Haul Route, Well Access & Irrigation Access)

Note: Property Ownership Data collect on Nov 2017 from Land Vision (jdh).

TRACT ACQUISITION REGISTER	
DEPARTMENT OF THE ARMY OFFICE OF THE SACRAMENTO DISTRICT ENGINEER SOUTH PACIFIC DIVISION	
CARTOGRAPHER _____ CARTO TECH. _____ CHECKED BY _____ SUBMITTED BY _____ STEVE J. CAREY LEAD, CADASTRAL TEAM RECOMMENDED BY _____ JAMES M. OLIVER CHIEF, GEOMATICS SECTION	CALIFORNIA ENGINEERING GEOMATICS SECTION - CADASTRAL TEAM YUBA RIVER ECOSYSTEM RESTORATION APPROVED BY _____ DATE _____ DIANE M. SIMPSON CHIEF, REAL ESTATE DIVISION
OFFICE, CHIEF OF ENGINEERS, WASHINGTON 25, D.C. REMIS CODE: _____ REMIS UNIQUE ID: _____ INSTALLATION OR PROJECT NO. _____	Date Saved: 8/23/2018 4:08:32 PM This sheet originally formatted to ARCH_E1_30"x42". SHEET 07 OF 07 DRAWING NO. _____

Path: S:\13_SPK\Yuba_Goldfields\Projects\Eco_Restorations_2017\0180816_YRER-FS_TAK.mxd



Final
As Applicable

PROJECT MAP

DEPARTMENT OF THE ARMY
USING SERVICE U.S.A.C.E. - CIVIL WORKS

LOCATION OF PROJECT

STATE CALIFORNIA
COUNTY YUBA COUNTY
DIVISION SOUTH PACIFIC (SPD)
DISTRICT SACRAMENTO (SPK)
ARMY AREA SIXTH ARMY

OF
OF

TRANSPORTATION FACILITIES

FEDERAL ROADS _____
STATE ROADS _____
AIRPORTS _____

ACQUISITION

TOTAL ACRES ACQUIRED _____
FEE _____
PUBLIC DOMAIN WITHDRAWN USE PERMIT
USE PERMIT (Other than P.D.) _____
TRANSFER WITHDRAWN USE PERMIT

LEASE
EASEMENT RESERVED IN FEE DISPOSAL _____
LESSER INTERESTS EASEMENT PERMIT LICENSE

DISPOSAL

TOTAL ACRES DISPOSED _____
SOLD _____
PUBLIC DOMAIN WITHDRAWN USE PERMIT
USE PERMIT (Other than P.D.) _____
TRANSFERRED (FEE) _____
LEASES TERMINATED _____
LESSER INTERESTS TERM _____
REASSIGNED _____
ACRES TO _____

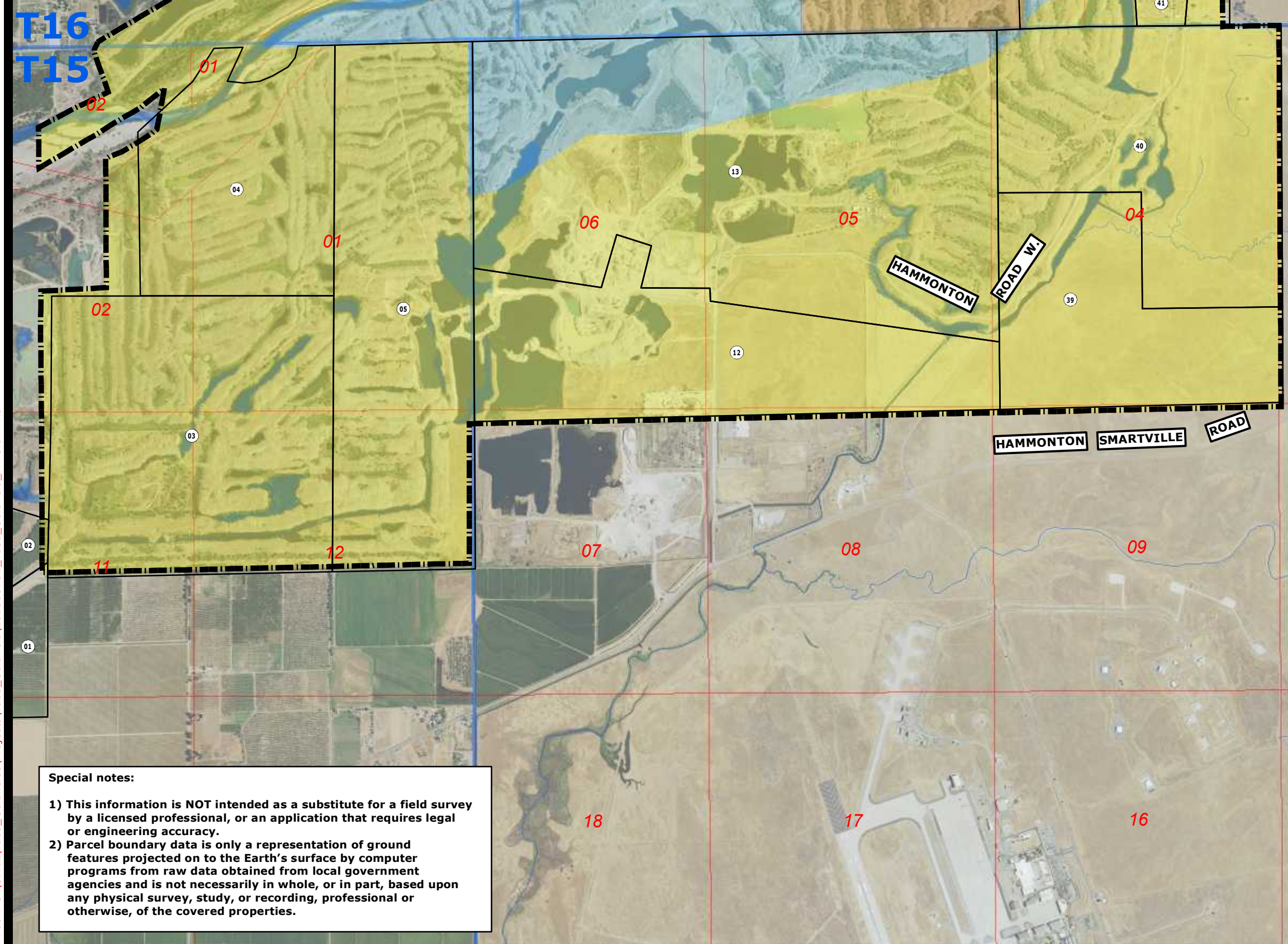
LEGEND

EXCEPT FOR SPECIAL SYMBOLS SHOWN BELOW, MAP SYMBOLS ARE STANDARD IN U.S. ARMY FIELD MANUAL, FM 21-31, TOPOGRAPHIC SYMBOLS, DEC. 1968.

- Border (Yuba Gold Fields)
- BLM Mineral Ownership
- Corps Mineral Ownership
- Private Mineral Ownership
- Township/Range
- Section Number

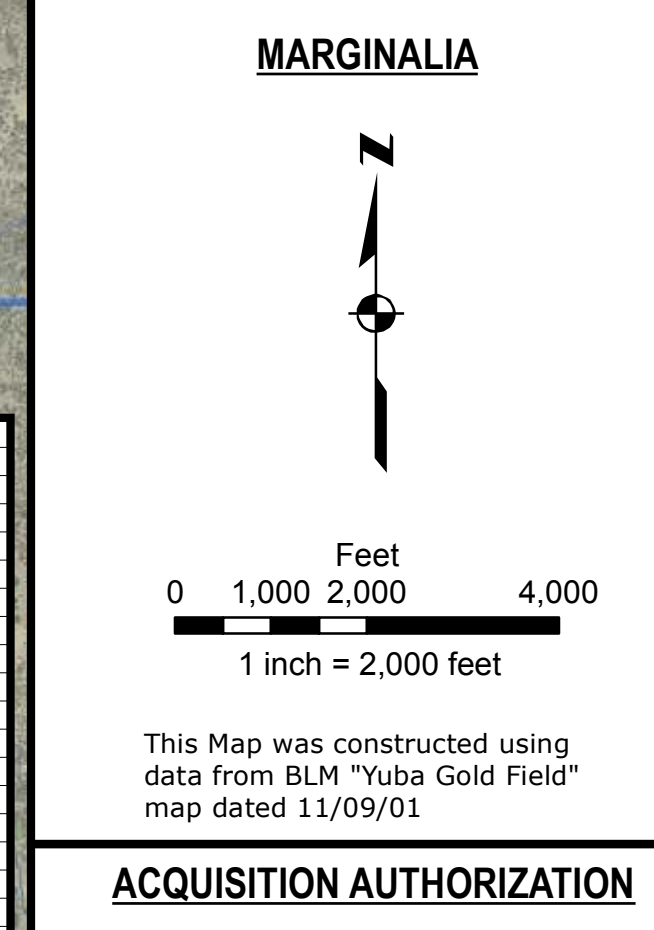
Table of Private Ownership

Label	APN	Owner	Label	APN	Owner	Label	APN	Owner
01	018-150-035	BARKER, MICHELE R	55	005-270-071	JALIL, ABDULNAZIN	109	005-500-044	HALE, THOMAS F
02	018-150-032	Shintaffer Farms Inc.	56	005-270-103	BEELER, DOUGLAS	110	006-170-142	Yuba River Properties
03	018-150-008	Western Aggregates Inc.	57	005-270-104	COX, MARSHON DALE	111	006-170-134	YUBA RIVER PROPERTIES
04	018-150-007	Western Aggregates Inc.	58	005-270-205	RIO DEL ORO FARMS #2 LLC	112	006-170-133	YUBA RIVER PROPERTIES
05	018-150-009	Western Aggregates Inc.	59	005-270-001	YUBA COUNTY OF	113	005-270-201	YUBA RIVER PROPERTIES
06	006-100-130	Teichert Land Co.	60	005-270-142	Western Aggregates Inc.	114	005-270-180	YUBA RIVER PROPERTIES
07	006-100-057	Siller, Charles (12.5)/CWS Enterprises Inc. (54.16) Raub (33.34)	61	005-270-141	U S A	115	005-270-181	YUBA RIVER PROPERTIES
08	006-100-025	KARLSHOEJ, AXEL M	62	005-270-012	CATLETT, EDWARD LEROY	116	005-270-200	YUBA RIVER PROPERTIES
09	006-100-024	RUSSELL MIKE CONSTRUCTION INC	63	005-270-013	WILBUR, MILTON A	117	005-270-182	YUBA RIVER PROPERTIES
10	006-160-143	Teichert Land Co.	64	005-270-010	JOHNSON, ROGER M	118	005-270-187	YUBA RIVER PROPERTIES
11	006-160-001	Siller, Charles (12.5)/CWS Enterprises Inc. (54.16) Raub (33.34)	65	005-270-009	JONES, CURTIS L	119	005-270-188	YUBA RIVER PROPERTIES
12	018-160-032	WESTERN AGGREGATES INC	66	005-370-008	GAUNTLETT, CONRAD	120	006-220-077	MALLARD, HUNLEY R
13	018-160-031	Western Aggregates Inc.	67	005-370-007	ANDREWS, CLIFFORD LEE	121	006-180-045	WILDTOOD LLC
14	006-160-072	KARLSHOEJ, AXEL M	68	005-370-021	THOMPSON, DAVID L	122	006-180-046	WILDTOOD LLC
15	006-010-011	HALLWOOD IRRIGATION CO	69	005-370-022	BERNOUJ, BRIAN E	123	006-180-047	WILDTOOD LLC
16	006-380-020	NEWLIN, JOHN CHARLES	70	005-370-020	WAHL, GEOFFREY A	124	006-180-027	Western Aggregates Inc.
17	006-380-021	FAGAN, JERRY D	71	005-370-019	RECHS, BERNARD P	125	006-180-066	Harris, Bob Roy III and Gwendolyn O L LLC
18	006-380-008	WEAVER, JAMES	72	005-370-023	HUTCHINS, DAVID J	126	006-180-054	O L LLC
19	006-380-011	STAPLES, RICHARD W	73	005-370-015	FAGAN, GORDON R	127	006-180-059	CENTER, CHARLES
20	006-380-007	SHEPHERD, BRETT	74	005-370-016	SHEPHERD, BRETT	128	006-180-058	CENTER, CHARLES D
21	006-380-012	HUNT, SCOTT D	75	005-370-017	SHERWOOD, VAN	129	006-180-052	CENTER, CHARLES D
22	006-380-025	SPARKS, MARTIN F	76	005-370-018	BIENVENIDO JR, JOHN	130	006-180-002	YUBA RIVER PROPERTIES
23	006-380-024	COOPER, RONALD A	77	005-370-004	TANSLEY, JEFFREY D	131	006-180-003	HOLLIB, JANICE J
24	006-380-003	TABER, BRAD	78	005-370-024	CORNEJO, BIENVENIDO G	132	006-180-064	HARRIS, BOB III
25	006-380-004	WHITELEY, JOHN E	79	005-370-005	RAMIREZ, SANTIAGO	133	006-180-065	HARRIS, BOB III
26	006-380-016	WEAVER, ANNIE G	80	005-570-021	BRESETT, RICHARD C	134	006-180-007	ADKINS, WALLACE L
27	006-380-006	MAINKA, GEORGE E	81	005-570-022	BINDERUP, DOUGLAS F	135	006-180-009	POTTER JR, LARRY L
28	006-380-013	HALL, PATRICK	82	005-570-023	BINDERUP, DOUGLAS F	136	006-180-010	POTTER JR, LARRY L
29	005-270-039	BANKS, JOHN R	83	005-570-039	TORTOSA, RICHARD D	137	006-180-061	POTTER JR, LARRY L
30	006-380-018	CALHOUN, RAY A	84	005-570-038	WASILENKO, DAVID	138	006-180-062	HARRIS III, BOB ROY
31	006-160-056	CALIFORNIA STATE OF	85	005-570-026	TORTOSA, RICHARD D	139	006-180-063	YUBA RIVER PROPERTIES
32	005-230-097	CURTIS, ROBERT L	86	006-170-118	Western Aggregates Inc.	140	006-180-067	Yuba River Properties
33	005-230-096	KING, RICHARD D	87	006-170-117	WESTERN AGGREGATES INC	141	006-190-020	YUBA RIVER PROPERTIES
34	005-230-104	BARKER, JOSEPH C	88	006-170-119	Western Aggregates Inc.	142	006-190-050	Yuba River Properties
35	005-230-080	MOON, GARY G	89	005-170-141	Long Bar Mine Inc.	143	006-190-004	YUBA RIVER PROPERTIES
36	005-230-090	TEAGARDEN, WALTER	90	006-170-140	Long Bar Mine Inc.	144	006-190-046	Yuba River Properties
37	005-230-114	BOWMAN, JAMES F	91	006-170-139	Long Bar Mine Inc.	145	006-190-051	Yuba River Properties
38	005-230-109	DE VAUGHN, VICKIE	92	005-270-018	Luftis, Douglas J. and Sonja CAPORICCO, CHARLES C	146	006-190-047	Yuba River Properties
39	018-160-033	Western Aggregates Inc.	93	005-570-027	Western Aggregates Inc.	147	005-290-075	Melba Ethel Adamson Trust (50)
40	018-160-034	Western Aggregates Inc.	94	005-570-013	SUTTON, ALAN	148	005-290-042	Yuba River Properties
41	006-160-131	WESTERN WATER COMPANY	95	005-270-122	WENSCROFT, ANITA L	149	005-290-043	Yuba River Properties
42	006-160-132	Western Aggregates Inc.	96	006-170-137	CALVERT, WILLIAM O	150	005-550-010	YUBA RIVER PROPERTIES II
43	006-170-021	Western Aggregates Inc.	97	006-170-138	CALVERT, WILLIAM O	151	005-540-001	YUBA RIVER PROPERTIES II
44	006-160-133	Western Aggregates Inc.	98	006-170-049	HENWOOD RANCH LLC	152	005-540-002	YUBA RIVER PROPERTIES II
45	006-170-071	Western Aggregates Inc.	99	006-220-074	HENWOOD RANCH LLC	153	005-540-003	YUBA RIVER PROPERTIES II
46	006-170-076	Western Aggregates Inc.	100	006-170-123	WILDTOOD LLC	154	005-540-004	YUBA RIVER PROPERTIES II
47	006-170-077	Western Aggregates Inc.	101	006-170-122	Western Aggregates Inc.	155	005-540-005	YUBA RIVER PROPERTIES II
48	005-270-037	YUBA COUNTY OF	102	005-170-065	Western Aggregates Inc.	156	005-540-006	YUBA RIVER PROPERTIES II
49	005-260-040	CLARK, DOROTHY DELL	103	006-170-124	WILDTOOD LLC	157	005-540-007	YUBA RIVER PROPERTIES II
50	005-270-159	BROWNS VALLEY CEMETERY DISTRICT	104	006-170-144	Long Bar Mine Inc.	158	005-540-008	YUBA RIVER PROPERTIES II
51	005-270-121	LOMA RICA BROWNS VALLEY COMMUNITY SERVICE	105	006-170-143	Yuba River Properties	159	005-550-004	YUBA RIVER PROPERTIES II
52	005-270-161	NORTH YUBA LITTLE LEAGUE INC	106	005-500-012	MATHEWS, DAVID PATRICK	160	006-160-054	CALHOUN RAY A & VIRGINIA M REV LIVING TRUST
53	005-260-005	BROWNS VALLEY SCHOOL	107	005-500-013	WILDER, EUGENE C	161	005-270-100	SMITH, GARY
54	005-250-048	JALIL, ABDULNAZIN	108	005-500-043	HALE, TED V			



Special notes:

- 1) This information is NOT intended as a substitute for a field survey by a licensed professional, or an application that requires legal or engineering accuracy.
- 2) Parcel boundary data is only a representation of ground features projected on to the Earth's surface by computer programs from raw data obtained from local government agencies and is not necessarily in whole, or in part, based upon any physical survey, study, or recording, professional or otherwise, of the covered properties.



This Map was constructed using data from BLM "Yuba Gold Field" map dated 11/09/01

ACQUISITION AUTHORIZATION

REAL ESTATE OWNERSHIP/ESTATE MAP

DEPARTMENT OF THE ARMY
OFFICE OF THE SACRAMENTO DISTRICT ENGINEER
SOUTH PACIFIC DIVISION

CARTOGRAPHER J. Henriksen Yuba County REAL ESTATE DIVISION California
CARTO TECH. _____
CHECKED BY _____
SUBMITTED BY _____
RECOMMENDED BY _____

STEVE J. CAREY
CHIEF CADASTRAL SECTION

PAUL V. ZIANO (ACTING)
CHIEF, ACQ. & MGMT. BRANCH

APPROVED BY PAUL V. ZIANO (ACTING) DATE _____
STAN J. WALLIN (ACTING)
CHIEF, REAL ESTATE DIVISION

OFFICE, CHIEF OF ENGINEERS, WASHINGTON 25, D.C.
REVIS CODE: _____
REVIS UNIQUE ID: _____

INSTALLATION OR PROJECT # _____

Date Saved: 8/4/2015 12:09:34 PM
This sheet originally formatted to ANSI D, 22"x34".

SHEET 1 OF 2 DRAWING NO. _____

ER 405-1-200 Eng_Form 1456A, Oct 81

EXHIBIT C – RISK LETTER



DEPARTMENT OF THE ARMY
U. S. ARMY CORPS OF ENGINEERS,
SACRAMENTO DISTRICT
1325 J STREET
SACRAMENTO, CA 95814-2922

November 15, 2017

Acquisition and Management Branch

Yuba County Water Agency
1220 F Street (F&13th Street)
Marysville, CA 95901

Dear Mr. Curt Aiken:

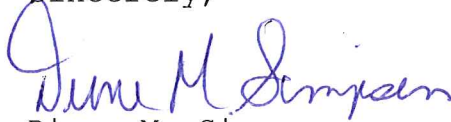
The Sacramento District, Corps of Engineers (Corps) and Yuba County Water Agency (YCWA) plan to partner in the construction required for the Yuba Ecosystem Restoration Report. Any land acquisitions that may occur prior to the Project Authorization and execution of the Project Partnering Agreement (PPA) and prior to the Government's formal notice to proceed with acquisitions and performance involve risks.

The Corps must caution and advise that there are risks associated with acquisition under such circumstances and that, as the non-Federal sponsor, your agency assumes full and sole responsibility for any and all costs, or liability arising out of the acquisition effort. Generally, these risks include, but may not be limited to the following:

- a. The Congress of the United States may not appropriate funds to construct the proposed project.
- b. A Project Partnership Agreement mutually agreeable to the YCWA and the Federal Government may not be executed and implemented.
- c. The YCWA may incur liability and expense by virtue of its ownership of contaminated lands, or interests therein, whether such liability should arise out of local, state, or Federal laws or regulations including liability arising out of the Comprehensive Environmental Response, Compensation and Liability Act (CERCLA), 42, U.S.C. 9601-9675.
- d. The YCWA may acquire interests or estates in real property that are later determined by the Government to be inappropriate, insufficient, or otherwise not required for the project.

- e. The YCWA may initially acquire insufficient or excessive real property acreage which may result in additional negotiations, payment of Public Law 91-646 (as amended) benefits, or payments of fair market value to affected landowners which could have been avoided by delaying acquisition until after PPA execution and the said formal notice by the Corps to commence acquisition of land and right of way.
 - f. The YCWA may incur costs or expenses in connection with its decision to acquire or perform acquisition activities in advance of the Project Authorization, an executed PPA, and the Government's notice to proceed which may not be creditable under the provisions of Public Law 99-662, The Water Resources Development Act of 1986.
5. Should you have any questions, please contact Realty Specialist, Laurie Parker, of my staff at (916) 557-6741.

Sincerely,



Diane M. Simpson
Chief, Real Estate Division

Copy Furnished:

Curt Aiken/Yuba County Water Agency
1220 F Street (F&13th Street)
Marysville, CA 95901

cc:

CESPK-PM (Chelsea Stewart)
CESPK-RE-CP (Read file copy)